

Sample Results Summary Sheet

Please return this form to the Curator for each allocated Sample

Sample ID: RA-QD04-0006

PI: Tomoki Nakamura

Type and date of analysis performed:

XRD Oct/10/2011~ Oct/13/2011

FE-SEM, FE-EPMA Now/28/2011 ~ Now/30/2011

Elements or phases identified: (Mg, Si, olivine, pyroxene, aromatic carbon, etc.)

XRD : OI, PI

FE-SEM : OI, PI

FE-EPMA : Si, Ti, Al, Fe, Mn, Mg, Ca, Na, K, Ni, S

Contaminant phases identified: (Al, SUS, carbon particles, etc.)

N/A

Sample handling:

XRD

Attached to carbon fiber with resin.

FE-SEM, FE-EPMA

Exposed in atmosphere.

Polished by M cross

C-coated (20 nm)

State of sample pre-analysis:

Attached to carbon fiber with resin. (XRD)

Polished section with resin embedded (FE-SEM, FE-EPMA)

State of sample post-analysis:

Attached to carbon fiber with resin. (XRD)

Polished section with resin embedded, C-coated (FE-SEM, FE-EPMA)

N₂ hold in sample holder.

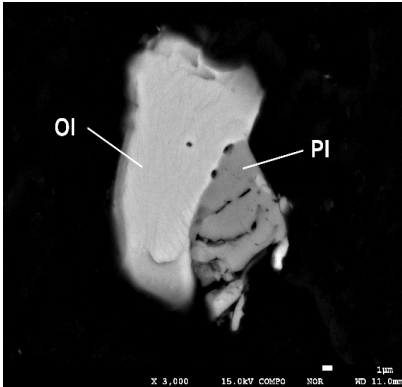
Analysis data Notes: (summary of the attached analysis data and/or images)

See attached sheets.

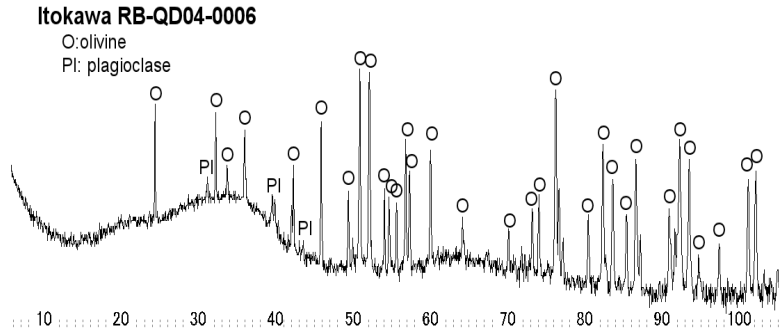
RB-QD04-0006

Analysis S-XRD (polish) FE-SEM FE-EPMA
 Present status Putted butt with some SIMS spots

FE-SEM/BSE



S-XRD



FE-EPMA

wt%	Olivine n=5Ol 1 sigma	LPx n=0 .Px 1 sigma	HPx n=0 4Px 1 sigma	Plagio n=3Pl 1 sigma
SiO2	36.45	1.07		63.28 1.33
TiO2	0.01	0.01		0.07 0.07
Al2O3	0.01	0.01		19.68 0.73
FeO	24.07	0.29		0.42 0.42
MnO	0.45	0.03		0.02 0.04
MgO	38.68	1.83		1.16 1.87
CaO	0.01	0.01		2.08 0.09
Na2O	0.01	0.01		9.92 0.36
K2O	0.01	0.01		0.67 0.27
Cr2O3	0.00	0.00		0.00 0.00
NiO	0.01	0.01		0.03 0.05
P2O5	0.02	0.02		0.00 0.00
SO3	0.01	0.02		0.11 0.11
Total	99.73	0.63		97.45 0.63
SUM				

Comment

Olivine (Fa#)	25.91	1.07	
LPx(Fs#)			
LPx(Wo#)			
LPx(En#)			
HPx(Fs#)			
HPx(Wo#)			
HPx(En#)			
Pl(Or#)		3.82	1.55
Pl(An#)		10.00	0.51
Pl(Ab#)		86.17	2.02