

Sample Results Summary Sheet

Please return this form to the Curator for each allocated Sample

Sample ID: RA-QD02-0066

PI: Akira Tsuchiyama

Type and date of analysis performed:

Tomography Jan/25/2011 (7 keV)

 Jan/24/2011 (8 keV)

Elements or phases identified: (Mg, Si, olivine, pyroxene, aromatic carbon, etc.)

Mode	OI	LPx	HPx	PI	Tr	Tae	Chm	CP	Kam
Vol %	100	-	-	-	-	-	-	-	-

Contaminant phases identified: (Al, SUS, carbon particles, etc.)

N/A

Sample handling:

Exposed in atmosphere.

State of sample pre-analysis:

Attached to carbon fiber with resin.

State of sample post-analysis:

N₂ hold in sample holder.

Analysis data Notes: (summary of the attached analysis data and/or images)

See attached sheets.

RA-QD02-0066

Operation Date Jan/25/2011 (7 keV)
Jan/24/2011 (8 keV)
operated by Y. Ogami(7 keV)
T. Matsumoto (8 keV)
analyzed by A. Shimada

Mode	Ol	LPx	HPx	Pl	Tr	Tae	Chm	CP	Kam
Vol %	100	-	-	-	-	-	-	-	-

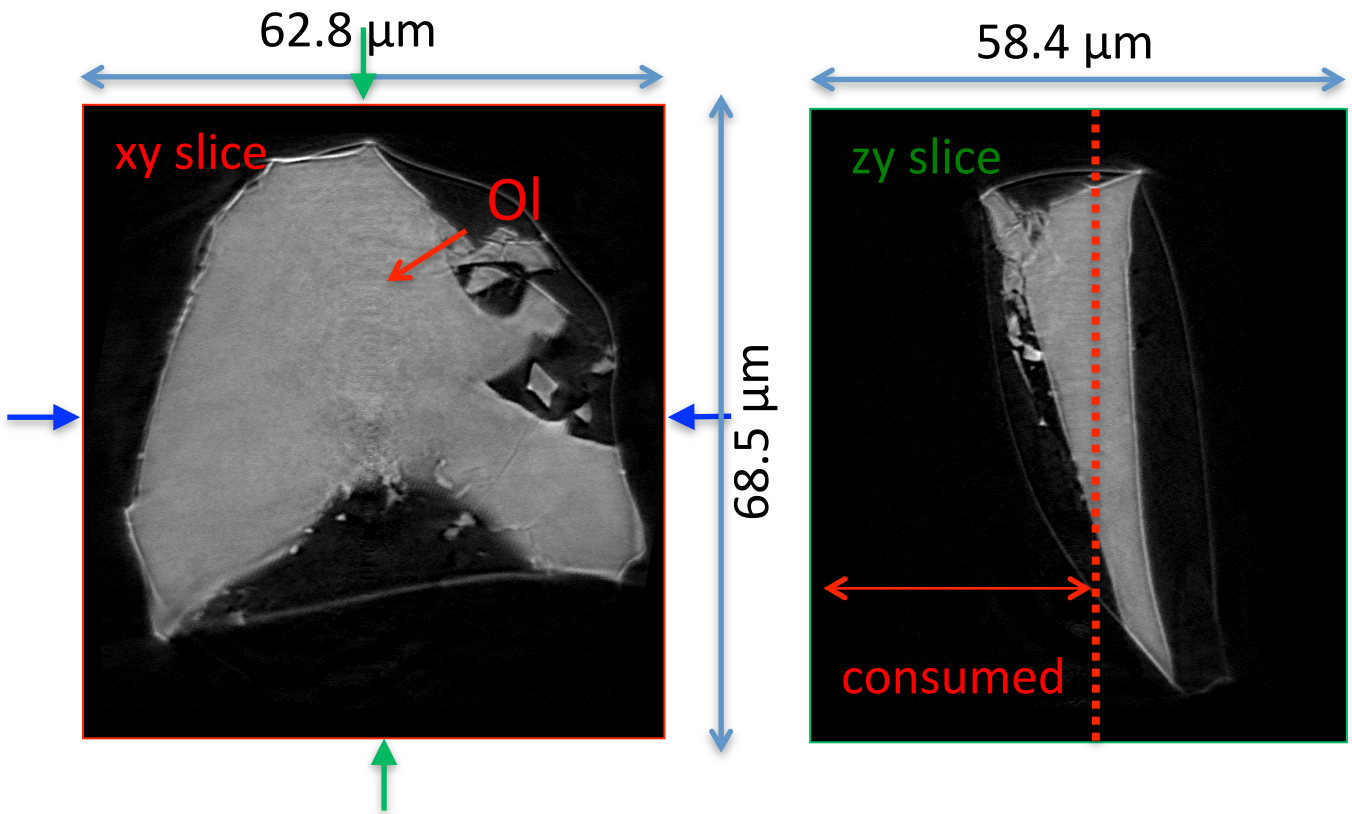
A (μm)	B (μm)	C (μm)	V (μm^3)	Porosity (%)
6.98	26.4	32.3	18473	5.32

Ol: olivine
LPx: low calcium pyroxene
HPx: high calcium pyroxene
Pl: plagioclase
Tr: troilite
Tae: taenite
Chm: chromite
CP: calcium phosphate
Kam: kamacite

A, B, and C: shortest, middle, and longest axial radii, respectively,
of a best-fit ellipsoid for the particle

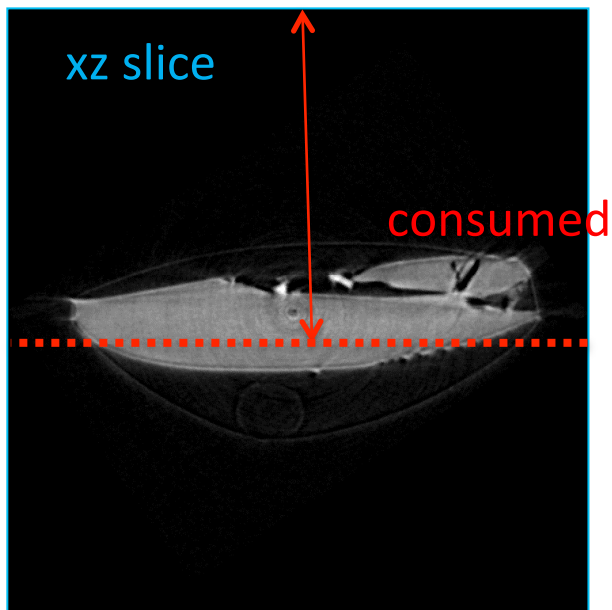
V: particle volume without pore
dz: CT image interval
LAC: linear attenuation coefficient of X-ray

RA-QD02-0066 7 keV

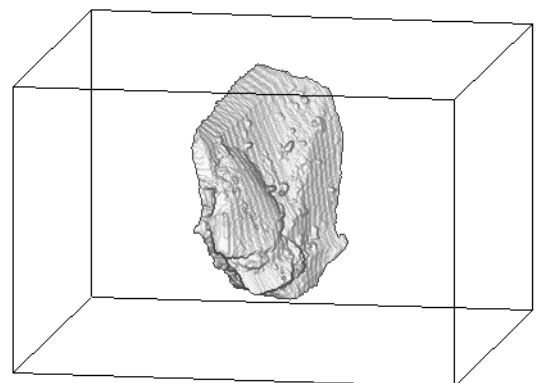


7keV/xy/375.tif

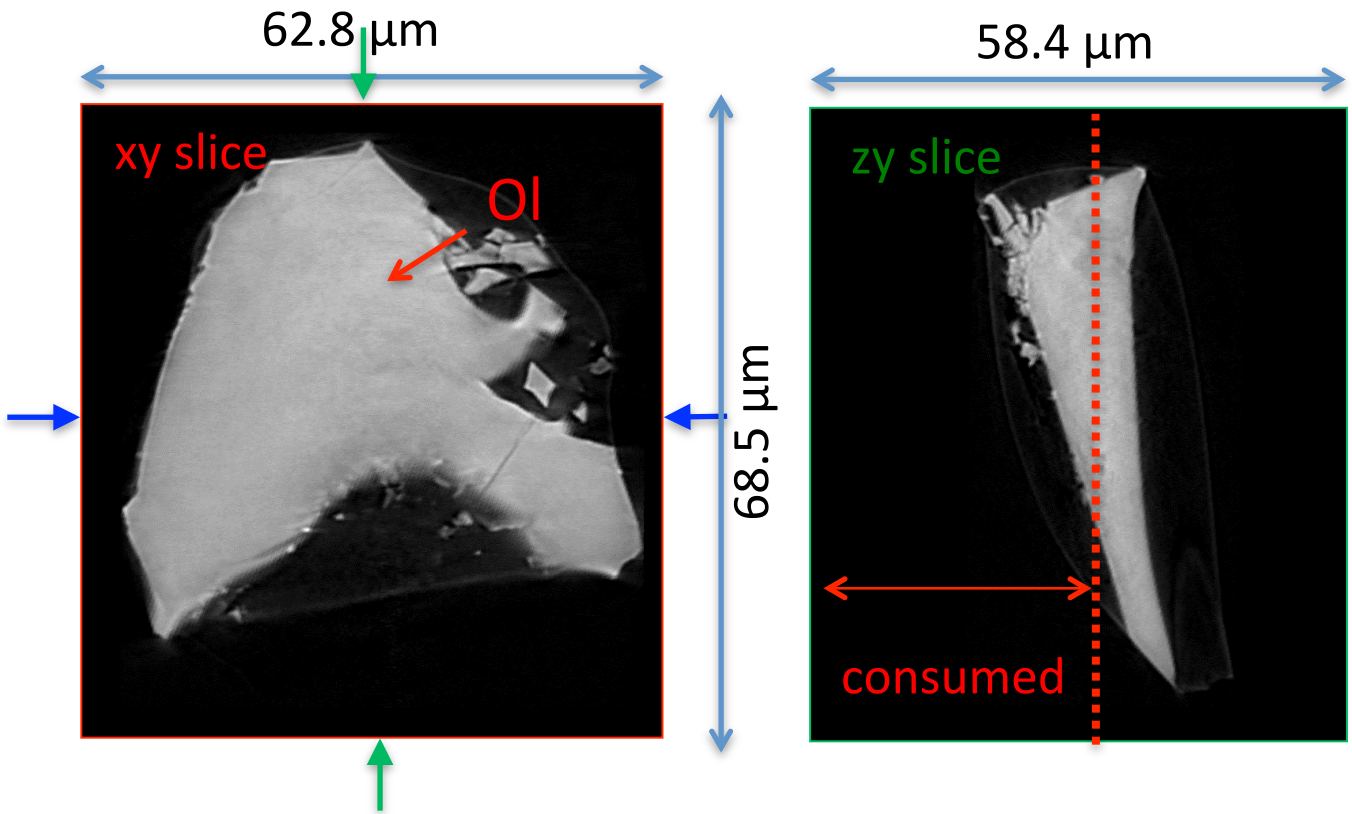
7keV/zy/367.tif



7keV/xz/400.tif

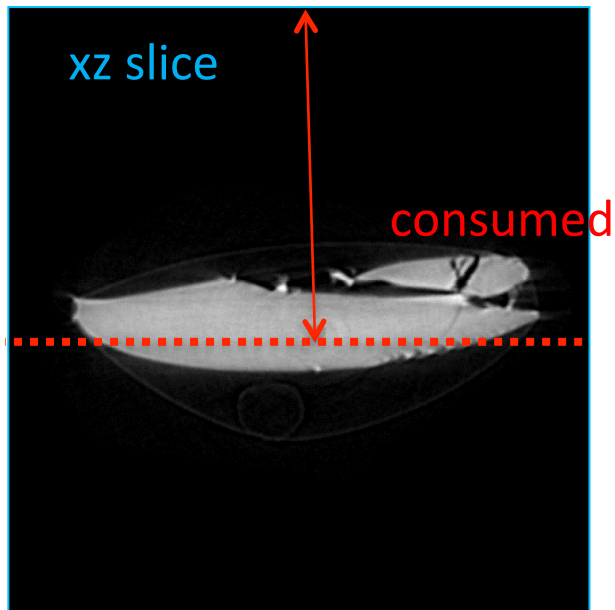


RA-QD02-0066 8 keV

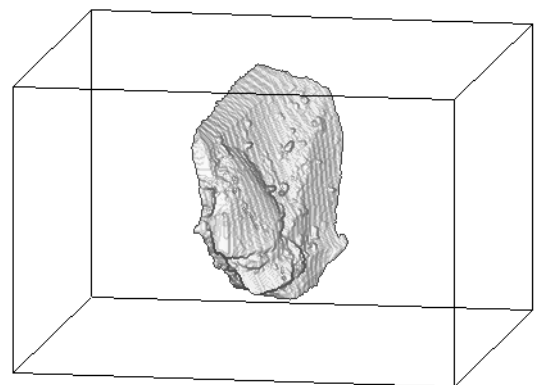


8keV/xy/375.tif

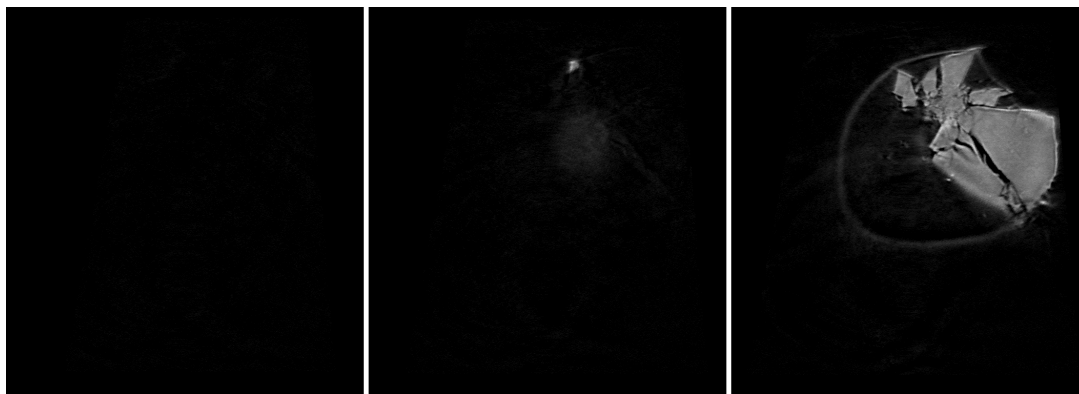
8keV/zy/367.tif



8keV/xz/400.tif



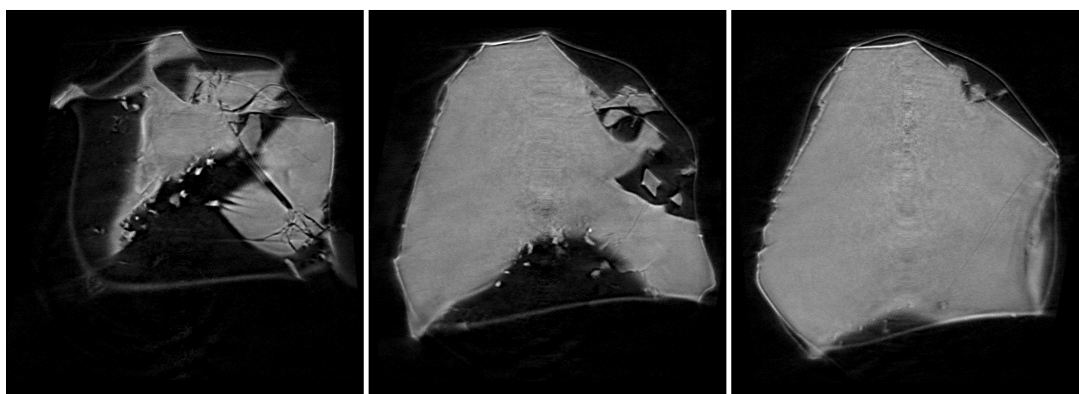
RA-QD02-0066 7 keV catalogue



257.tif

286.tif

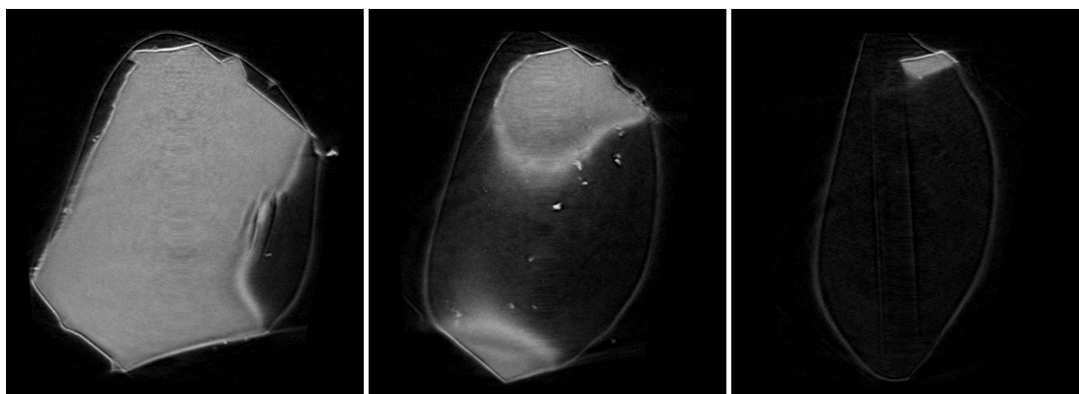
315.tif



344.tif

373.tif

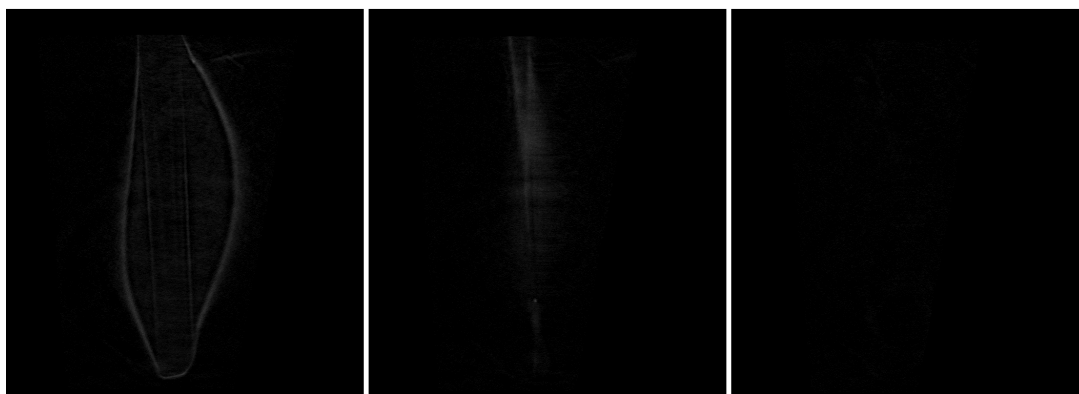
402.tif



431.tif

460.tif

489.tif



518.tif

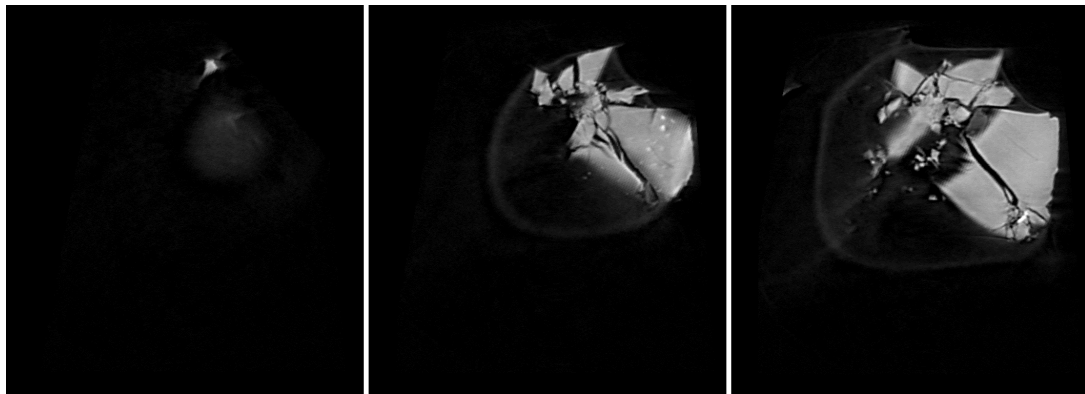
547.tif

576.tif

dZ = 2.48443 um

10 um
287 cm⁻¹ (LAC)

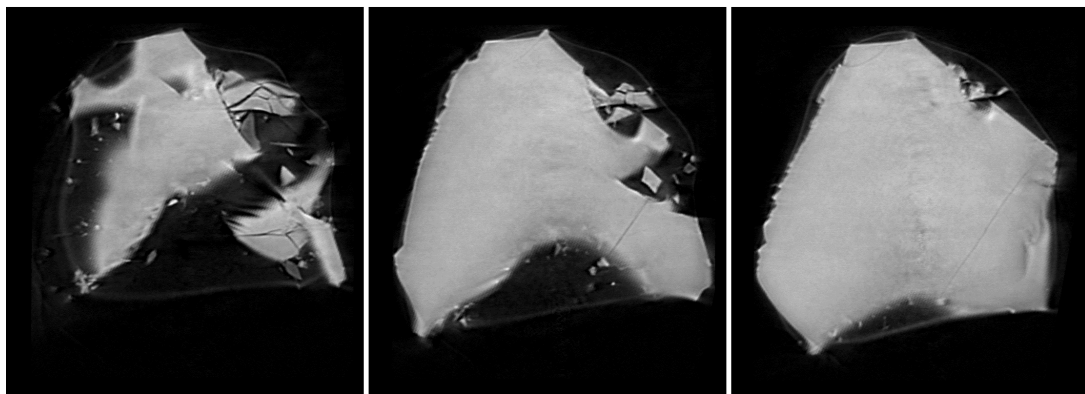
RA-QD02-0066 8 keV catalogue



290.tif

312.tif

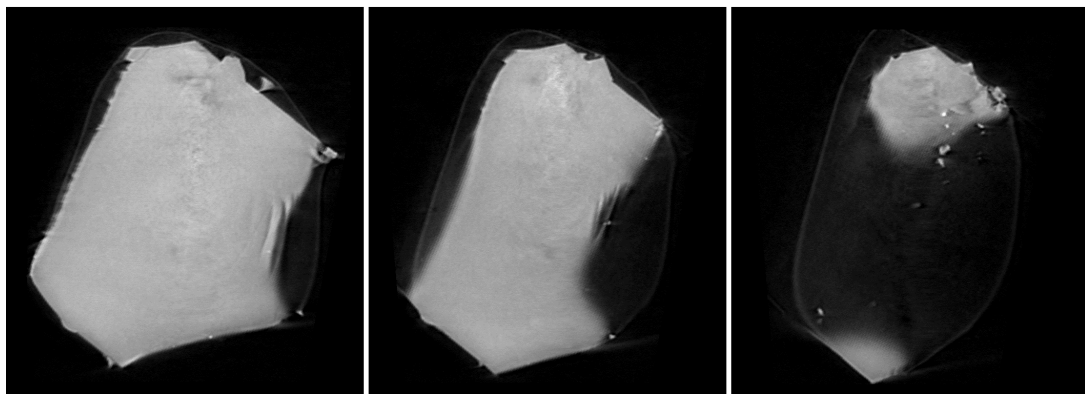
334.tif



356.tif

378.tif

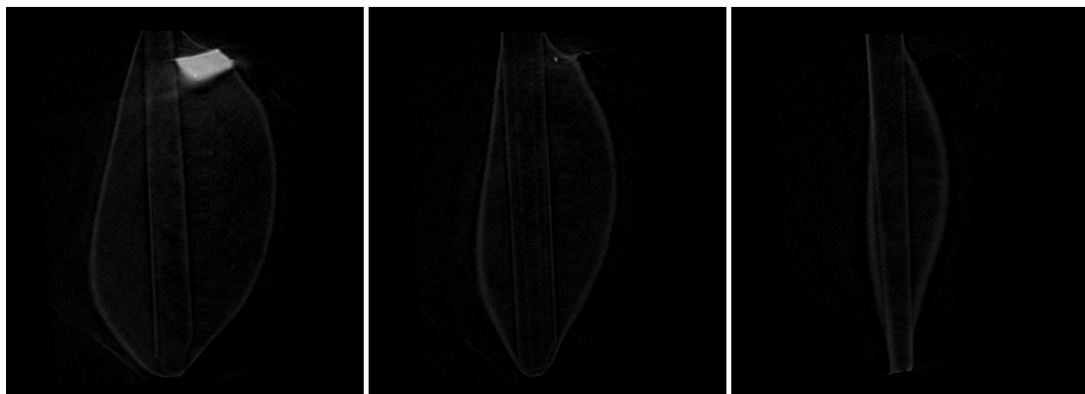
400.tif



422.tif

444.tif

466.tif



488.tif

510.tif

532.tif

dZ = 1.88474 um

10 um
431 cm⁻¹ (LAC)

RA-QD02-0066 Dual energy histogram

