

Sample Results Summary Sheet

Please return this form to the Curator for each allocated Sample

Sample ID: RA-QD02-0064

PI: Akira Tsuchiyama

Type and date of analysis performed:

Tomography Jul/04/2011 (7 keV)

Jul/04/2011 (8 keV)

Elements or phases identified: (Mg, Si, olivine, pyroxene, aromatic carbon, etc.)

Mode	OI	LPx	HPx	PI	Tr	Tae	Chm	CP	Kam
Vol %	100	-	-	-	-	-	-	-	-

Contaminant phases identified: (Al, SUS, carbon particles, etc.)

N/A

Sample handling:

Exposed in atmosphere.

State of sample pre-analysis:

Attached to glass fiber.

State of sample post-analysis:

N₂ hold in sample holder.

Analysis data Notes: (summary of the attached analysis data and/or images)

See attached sheets.

RA-QD02-0064

Operation Date Jul/04/2011 (7 keV)
Jul/04/2011 (8 keV)
operated by T. Matsumoto (7 keV)
T. Matsumoto (8 keV)
analyzed by J. Matsuno

Mode	Ol	LPx	HPx	Pl	Tr	Tae	Chm	CP	Kam
Vol %	100	-	-	-	-	-	-	-	-

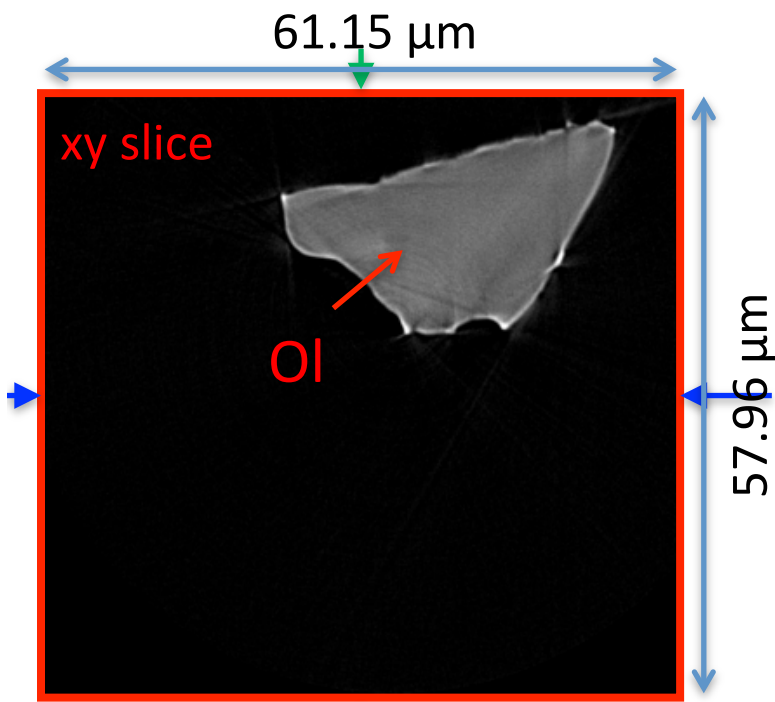
A (μm)	B (μm)	C (μm)	V (μm^3)	Porosity (%)
9.35	16.18	27.68	13401	2.17

Ol: olivine
LPx: low calcium pyroxene
HPx: high calcium pyroxene
Pl: plagioclase
Tr: troilite
Tae: taenite
Chm: chromite
CP: calcium phosphate
Kam: kamacite

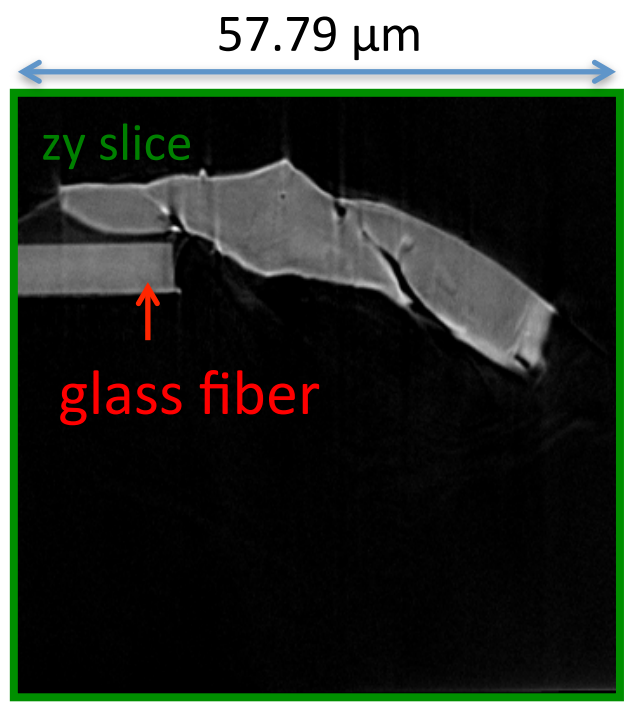
A, B, and C: shortest, middle, and longest axial radii, respectively,
of a best-fit ellipsoid for the particle

V: particle volume without pore
dz: CT image interval
LAC: linear attenuation coefficient of X-ray

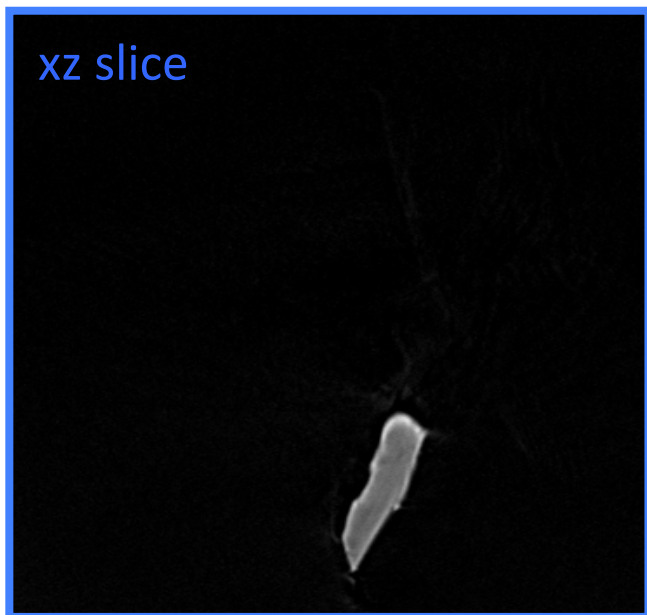
RA-QD02-0064 7 keV



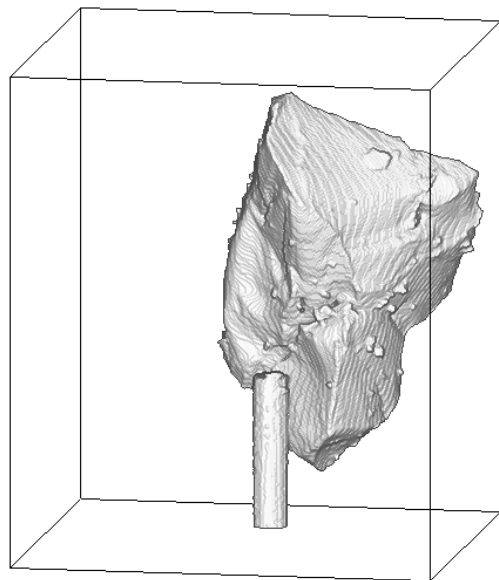
7keV/xy/172.tif



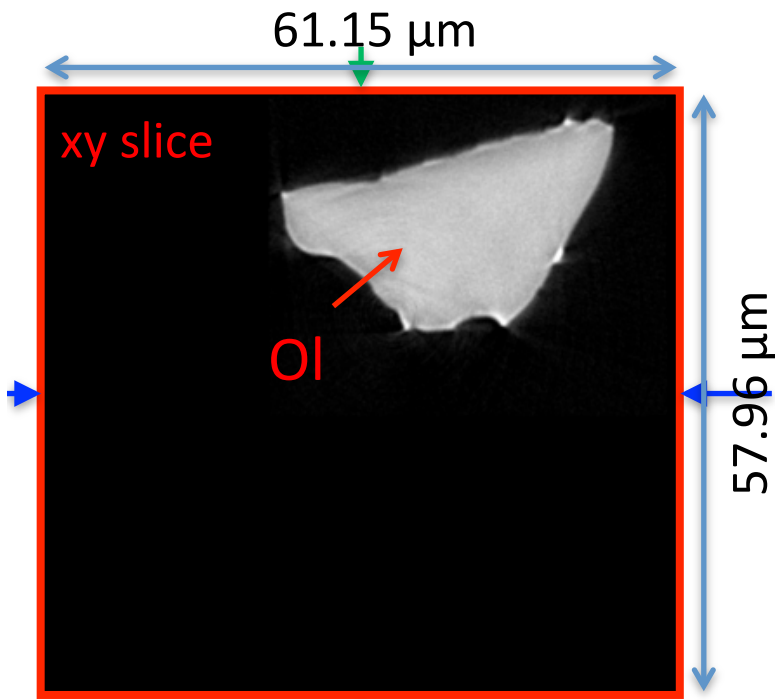
7keV/zy/182.tif



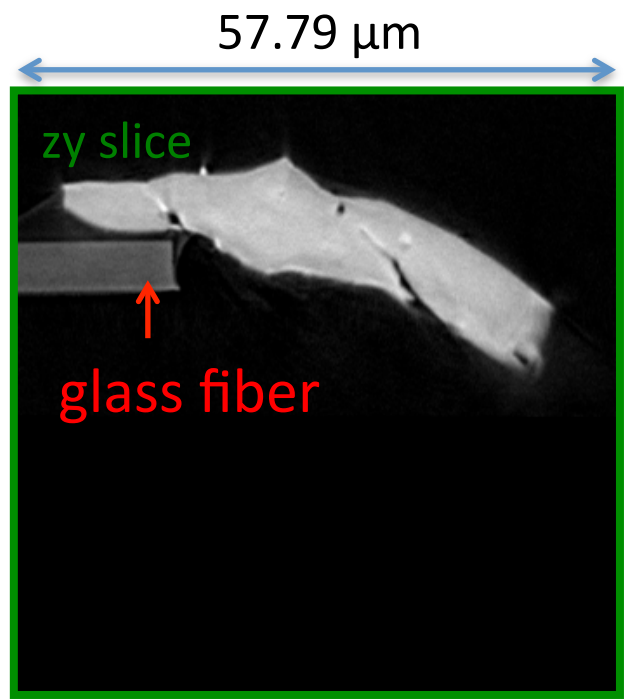
7keV/xz/173.tif



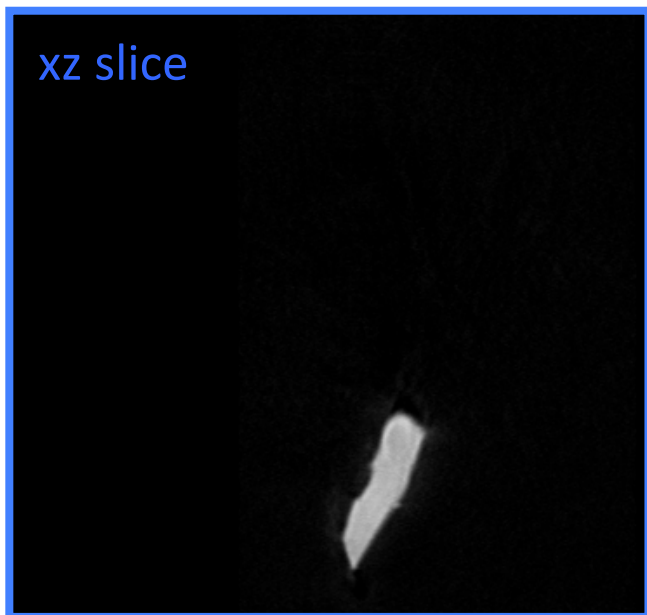
RA-QD02-0064 8 keV



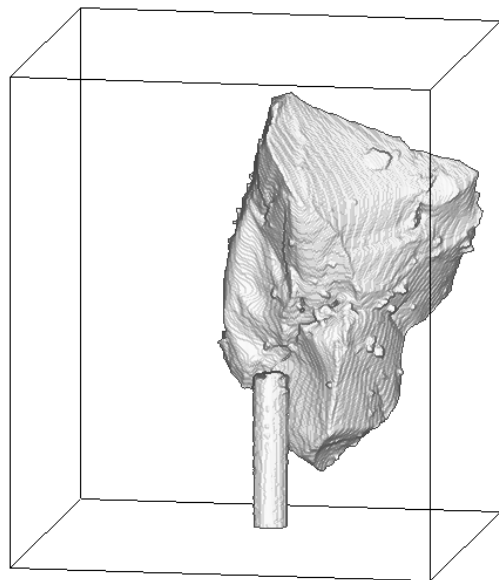
8keV/xy/172.tif



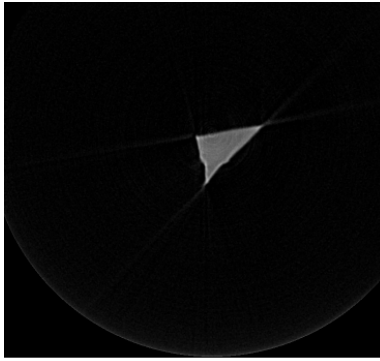
8keV/zy/182.tif



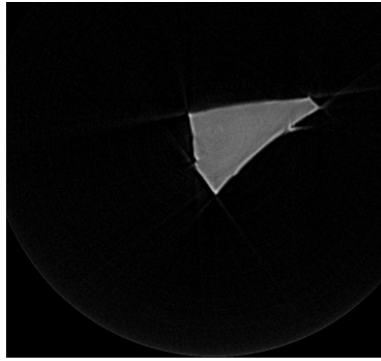
8keV/xz/173.tif



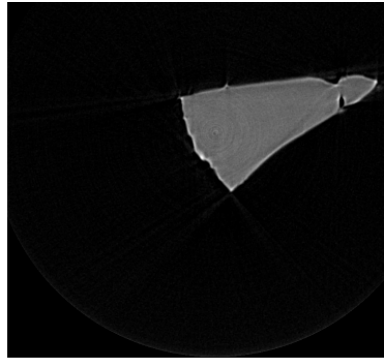
RA-QD02-0064 7 keV catalogue



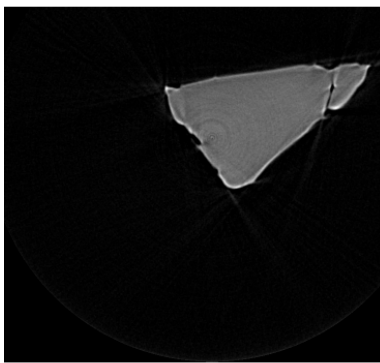
026.tif



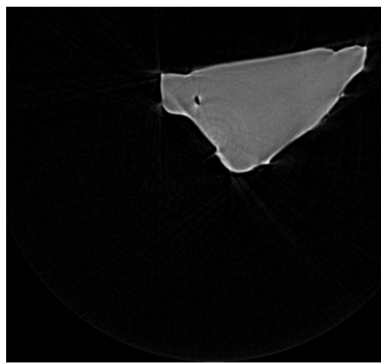
053.tif



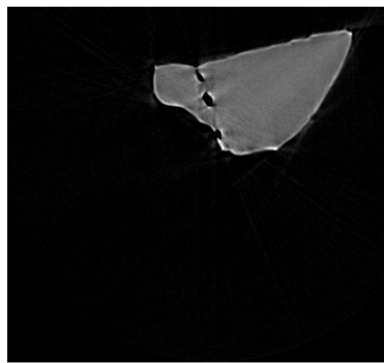
080.tif



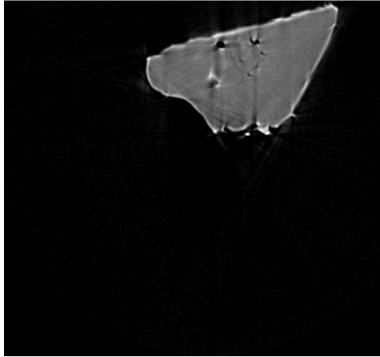
107.tif



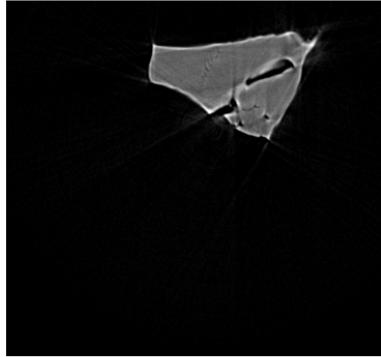
134.tif



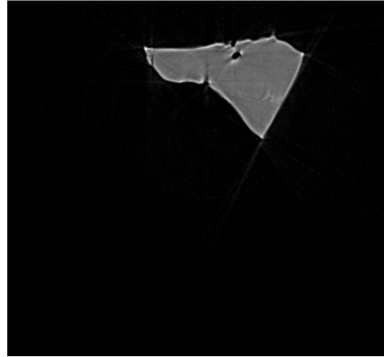
161.tif



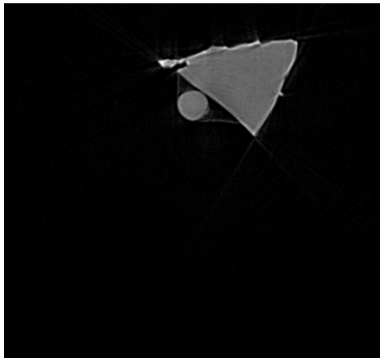
188.tif



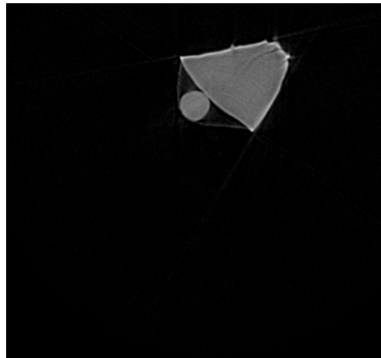
215.tif



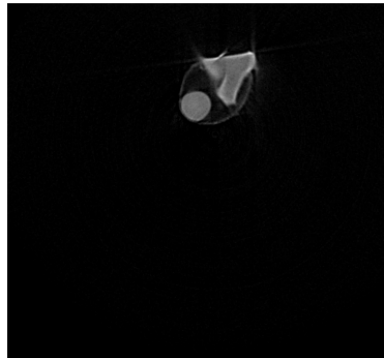
242.tif



269.tif



296.tif

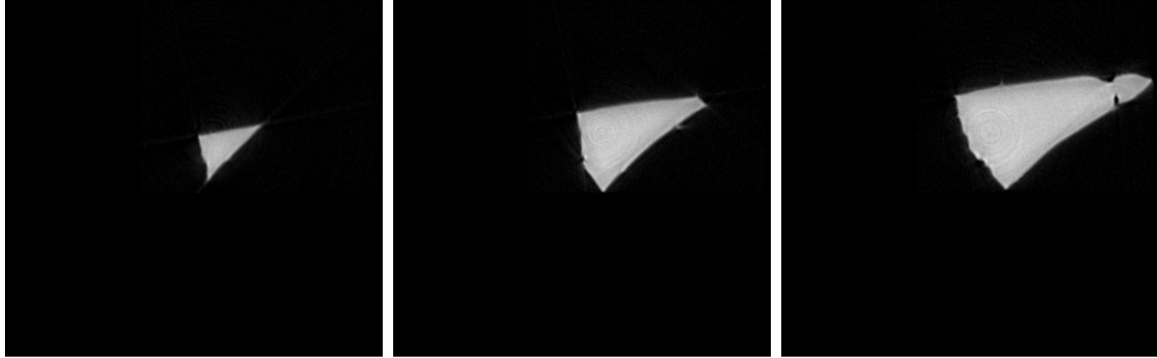


323.tif

dZ = 4.536 um



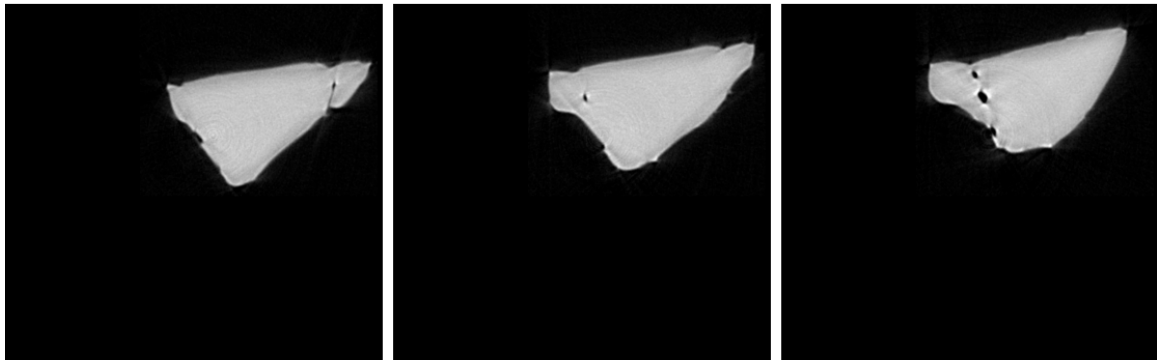
RA-QD02-0064 8 keV catalogue



026.tif

053.tif

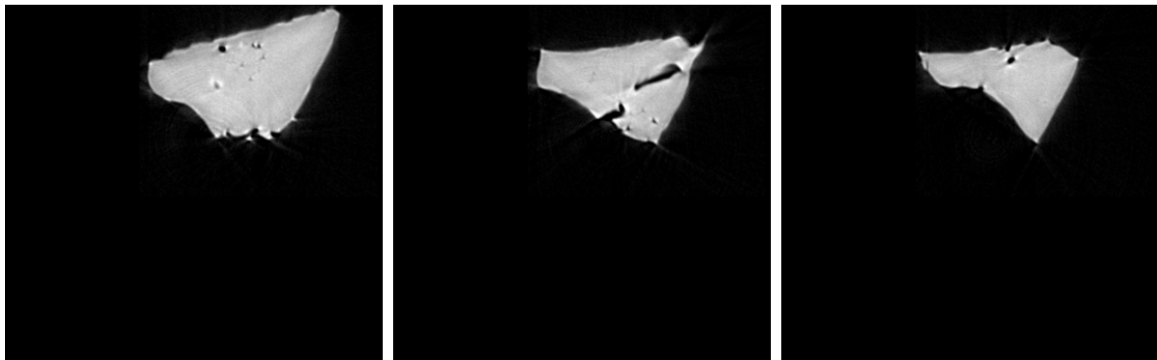
080.tif



107.tif

134.tif

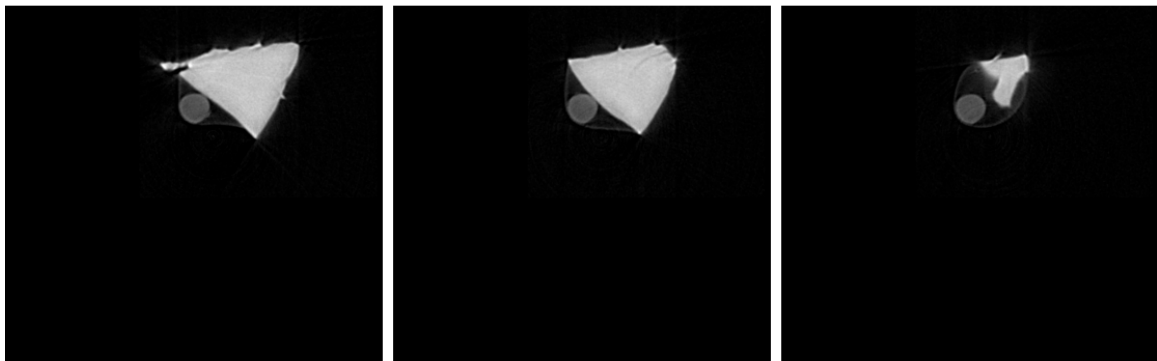
161.tif



188.tif

215.tif

242.tif



269.tif

296.tif

323.tif

dZ = 4.536 um

21 um

431 cm⁻¹ (LAC)

RA-QD02-0064 Dual energy histogram

