

Sample Results Summary Sheet

Please return this form to the Curator for each allocated Sample

Sample ID: RA-QD02-0050

PI: Akira Tsuchiyama

Type and date of analysis performed:

Tomography Jan/25/2011 (7 keV)

 Jan/24/2011 (8 keV)

Elements or phases identified: (Mg, Si, olivine, pyroxene, aromatic carbon, etc.)

Mode	OI	LPx	HPx	PI	Tr	Tae	Chm	CP	Kam
Vol %	67.2		17.1	15.7					

Contaminant phases identified: (Al, SUS, carbon particles, etc.)

N/A

Sample handling:

Exposed in atmosphere.

State of sample pre-analysis:

Attached to carbon fiber with resin.

State of sample post-analysis:

N₂ hold in sample holder.

Analysis data Notes: (summary of the attached analysis data and/or images)

See attached sheets.

RA-QD02-0050

Operation Date Jan/25/2011 (7 keV)
 Jan/24/2011 (8 keV)
operated by T. Matsumoto (7 keV)
 T. Ogami (8 keV)
analyzed by T. Nagano

Mode	Ol	LPx	HPx	Pl	Tr	Tae	Chm	CP	Kam
Vol %	67.2		17.1	15.7					

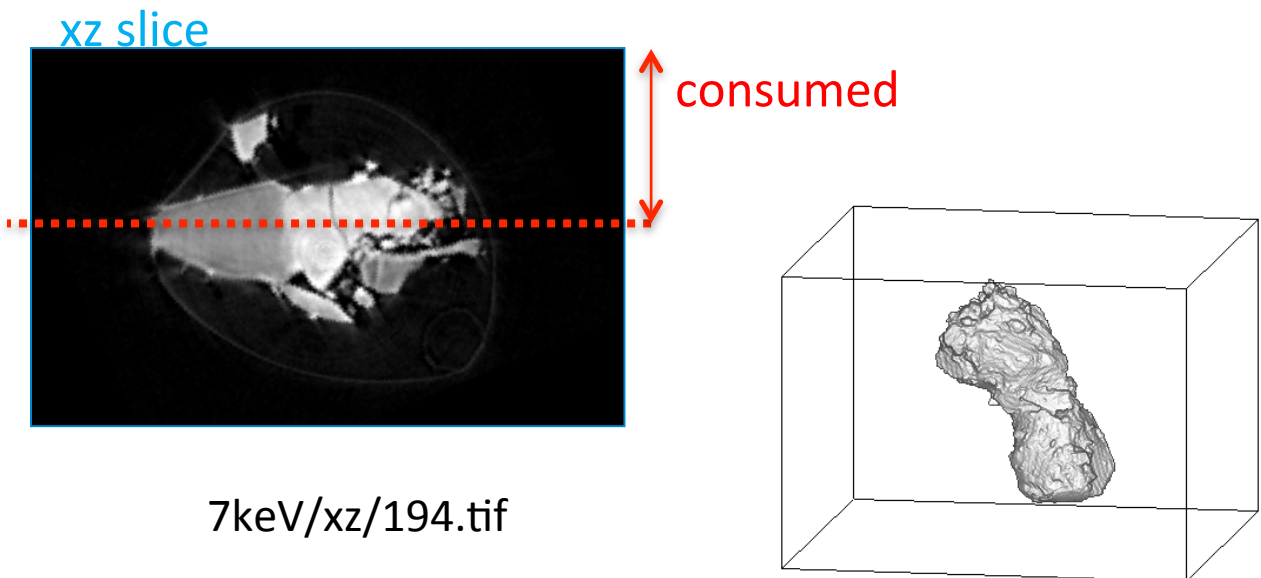
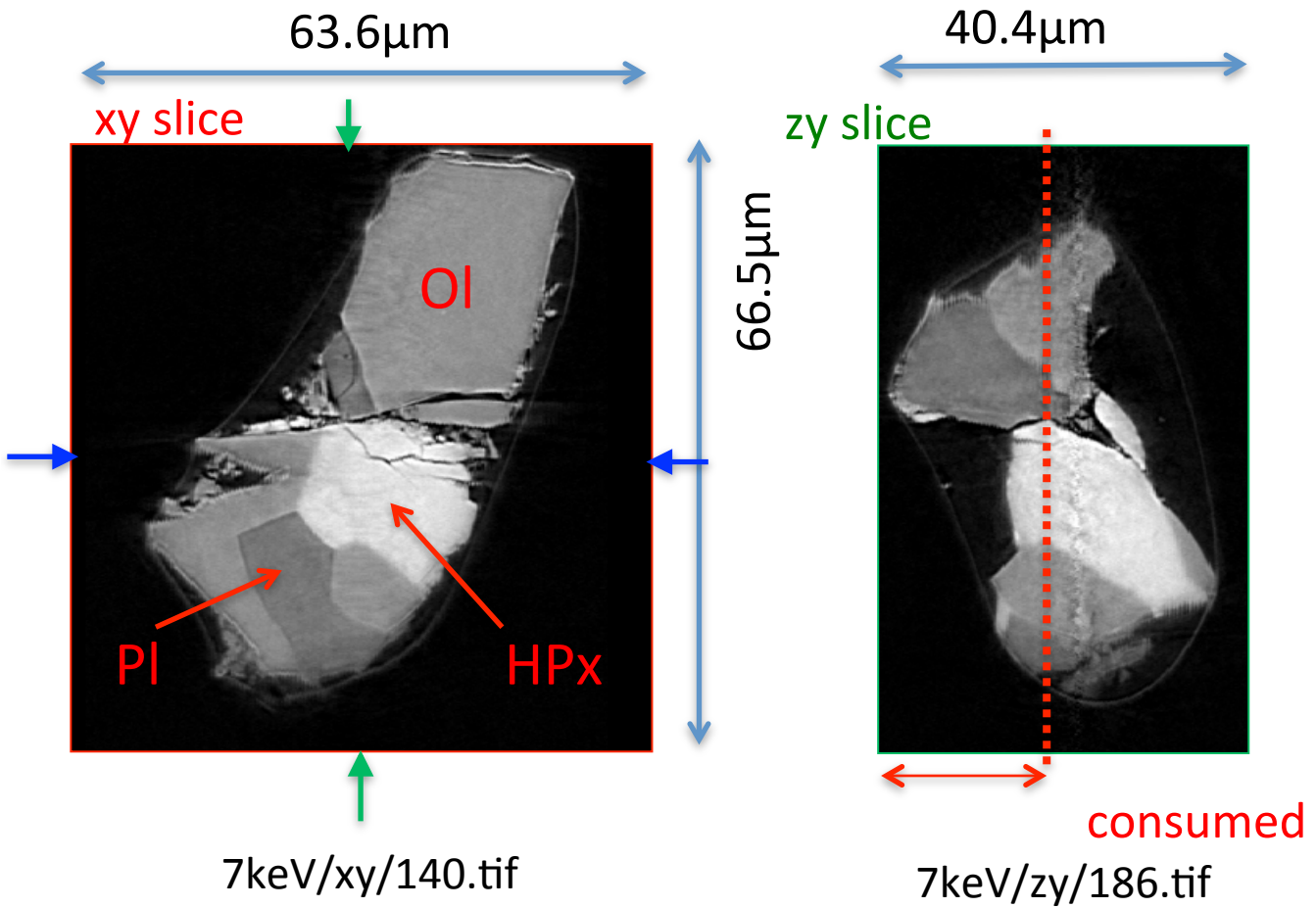
A (μm)	B (μm)	C (μm)	V (μm^3)	Porosity (%)
14.246	15.051	40.141	26263	5.28

Ol: olivine
LPx: low calcium pyroxene
HPx: high calcium pyroxene
Pl: plagioclase
Tr: troilite
Tae: taenite
Chm: chromite
CP: calcium phosphate
Kam: kamacite

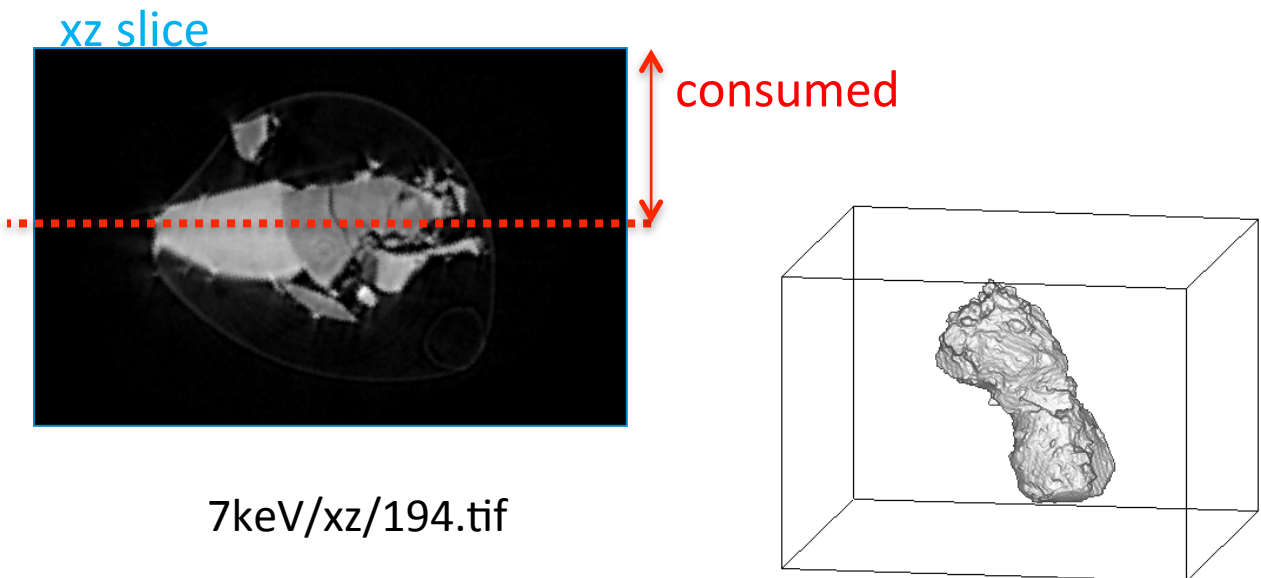
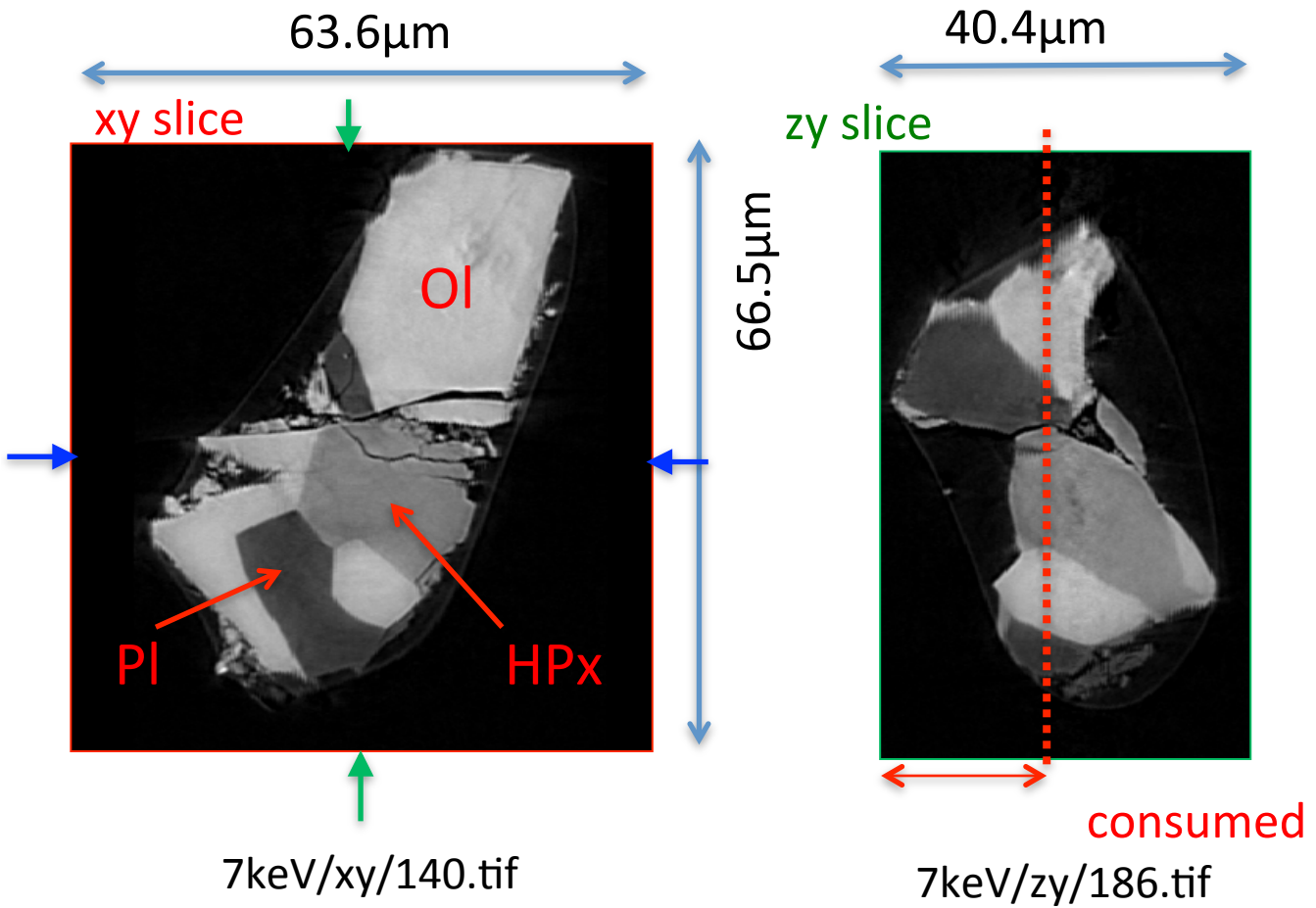
A, B, and C: shortest, middle, and longest axial radii, respectively,
of a best-fit ellipsoid for the particle

V: particle volume without pore
dz: CT image interval
LAC: linear attenuation coefficient of X-ray

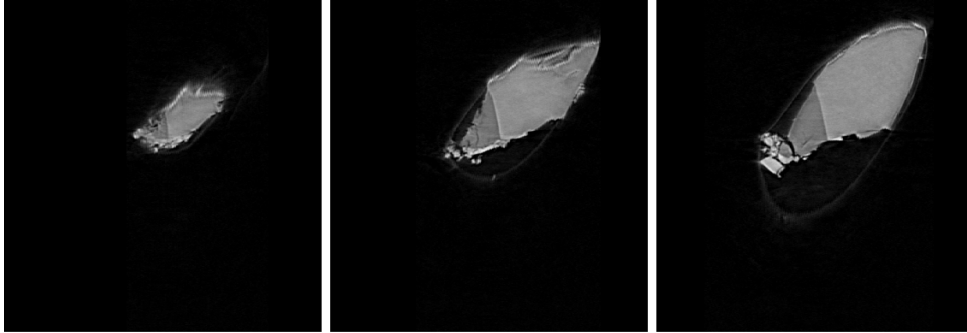
RA-QD02-0050 7keV



RA-QD02-0050 8keV



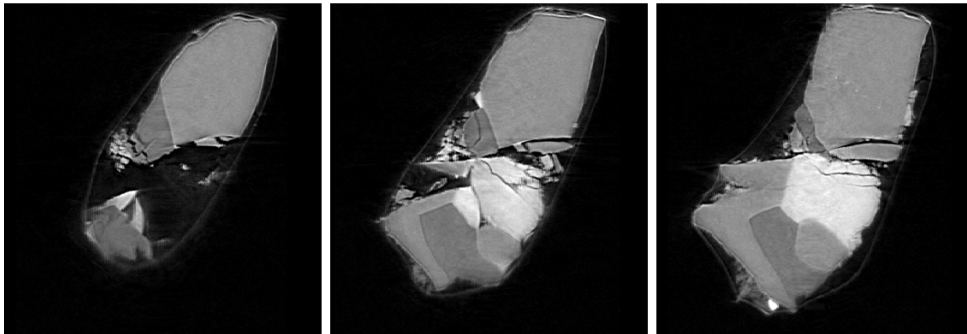
RA-QD02-0050 7keV catalogue



058.tif

076.tif

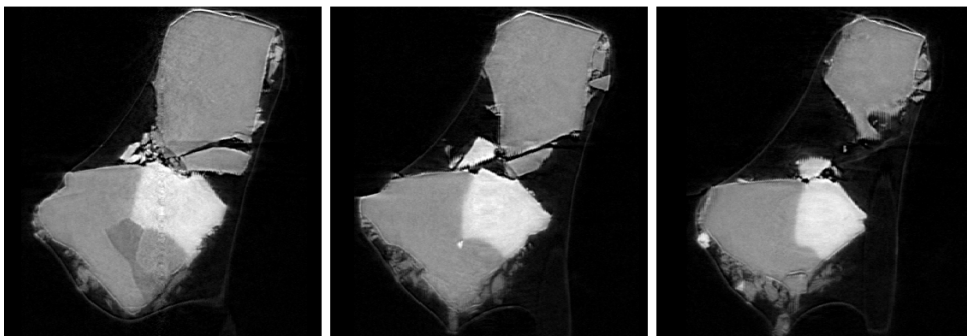
094.tif



112.tif

130.tif

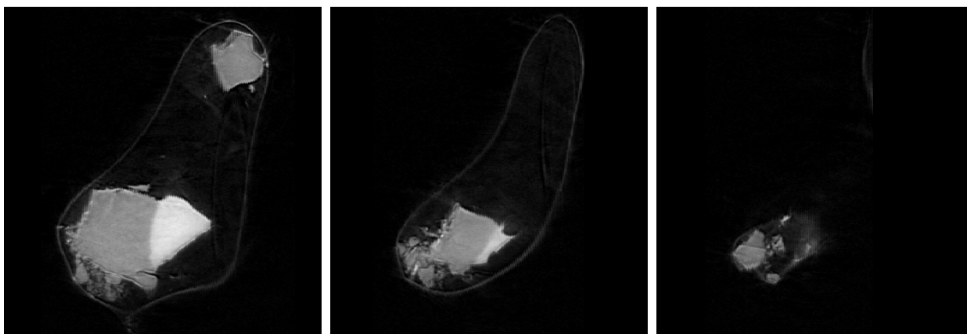
148.tif



166.tif

184.tif

202.tif

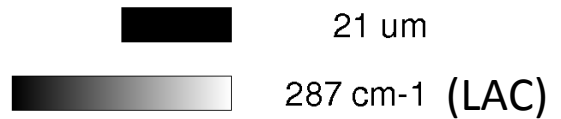


220.tif

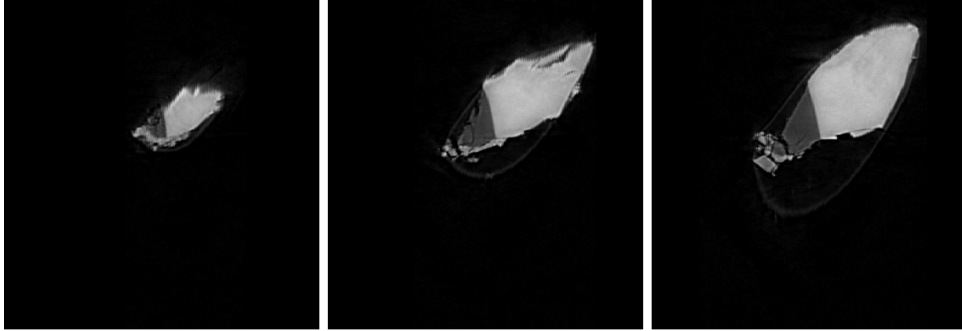
238.tif

256.tif

dZ = 3.08412 μm



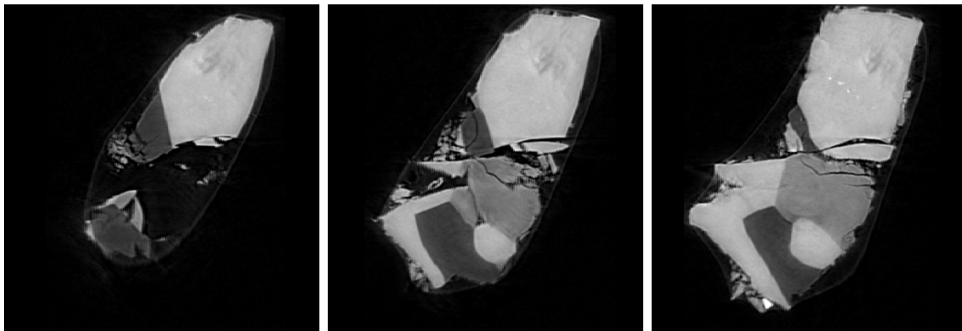
RA-QD02-0050 8keV catalogue



058.tif

076.tif

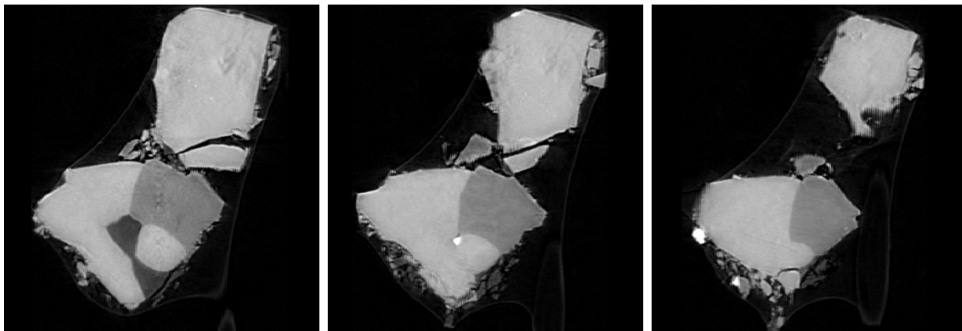
094.tif



112.tif

130.tif

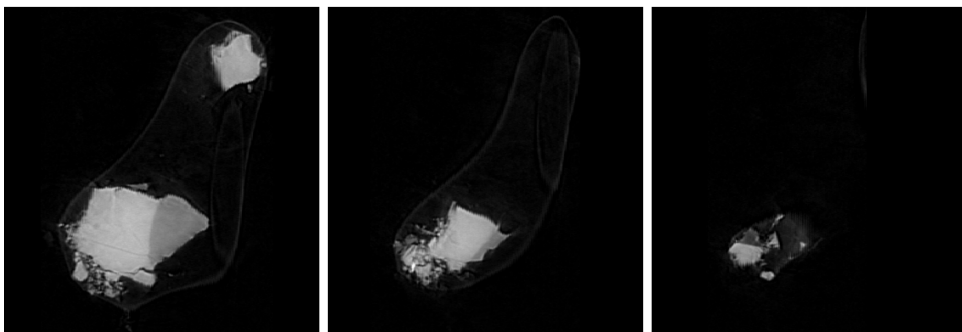
148.tif



166.tif

184.tif

202.tif

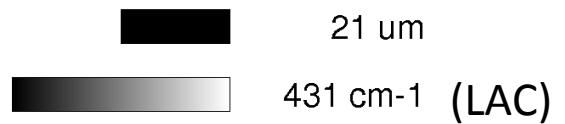


220.tif

238.tif

256.tif

dZ = 3.08412 um



RA-QD02-0050 Dual energy histogram

