

Sample Results Summary Sheet

Please return this form to the Curator for each allocated Sample

Sample ID: RA-QD02-0025-02

PI: Akira Tsuchiyama

Type and date of analysis performed:

Tomography Jan/22/2011 (7 keV)

 Jan/24/2011 (8 keV)

Elements or phases identified: (Mg, Si, olivine, pyroxene, aromatic carbon, etc.)

Mode	OI	LPx	HPx	PI	Tr	Tae	Chm	CP	Kam
Vol %	-	-	-	100	-	-	-	-	-

Contaminant phases identified: (Al, SUS, carbon particles, etc.)

N/A

Sample handling:

Exposed in atmosphere.

State of sample pre-analysis:

Attached to carbon fiber with resin.

State of sample post-analysis:

N₂ hold in sample holder.

Analysis data Notes: (summary of the attached analysis data and/or images)

See attached sheets.

RA-QD02-0025-02

Operation Date Jan/22/2011 (7 keV)
 Jan/24/2011 (8 keV)
operated by T. Ogami (7 keV)
 T. Ogami (8 keV)
analyzed by J. Matsuno

Mode	Ol	LPx	HPx	Pl	Tr	Tae	Chm	CP	Kam
Vol %	-	-	-	100	-	-	-	-	-

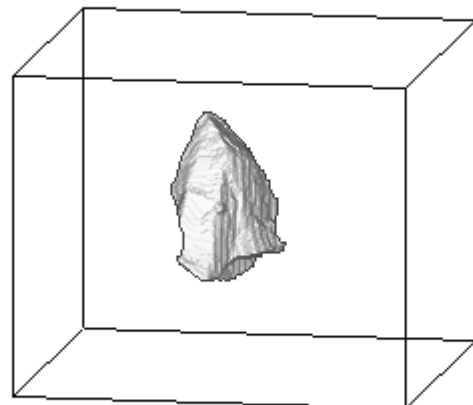
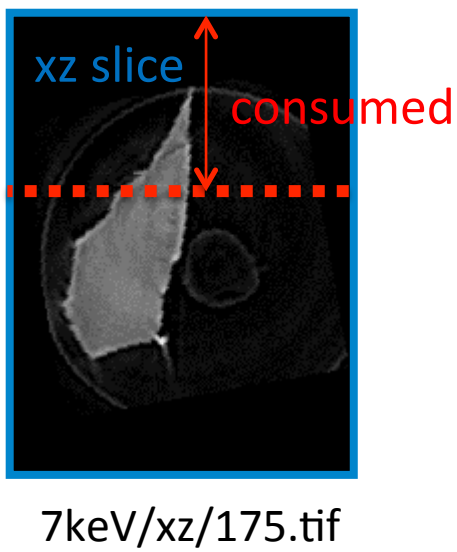
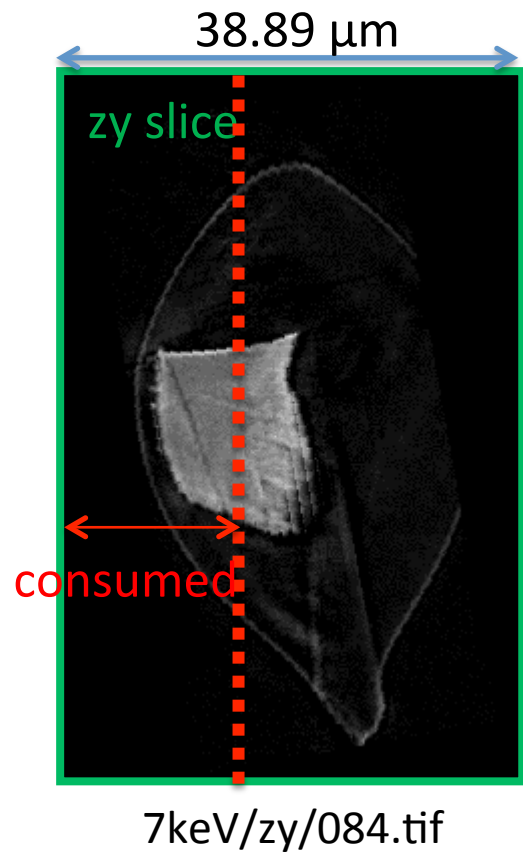
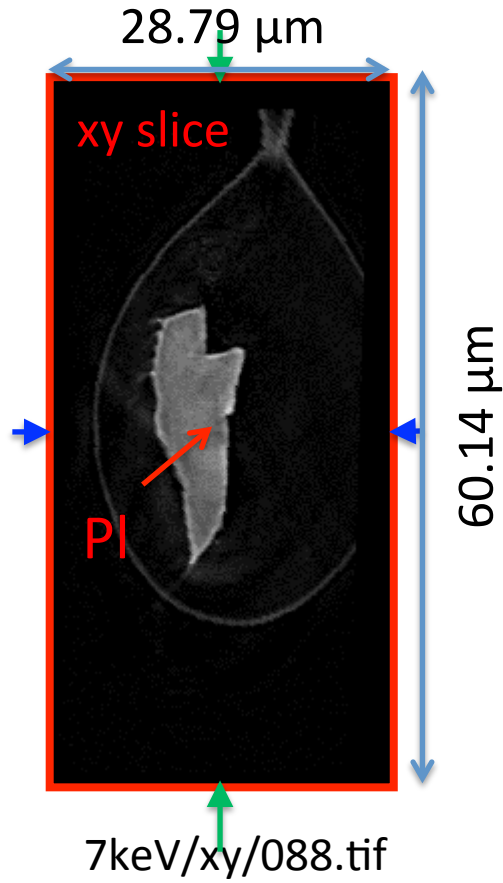
A (μm)	B (μm)	C (μm)	V (μm^3)	Porosity (%)
4.47	11.4	14.2	2392	0.01

Ol: olivine
LPx: low calcium pyroxene
HPx: high calcium pyroxene
Pl: plagioclase
Tr: troilite
Tae: taenite
Chm: chromite
CP: calcium phosphate
Kam: kamacite

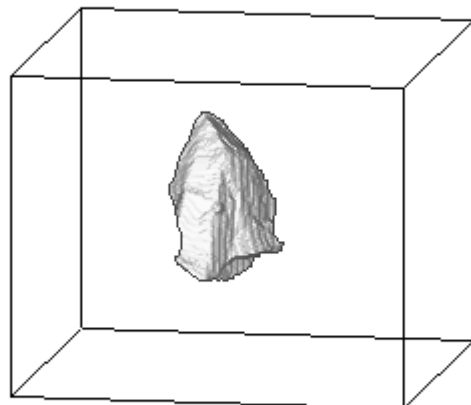
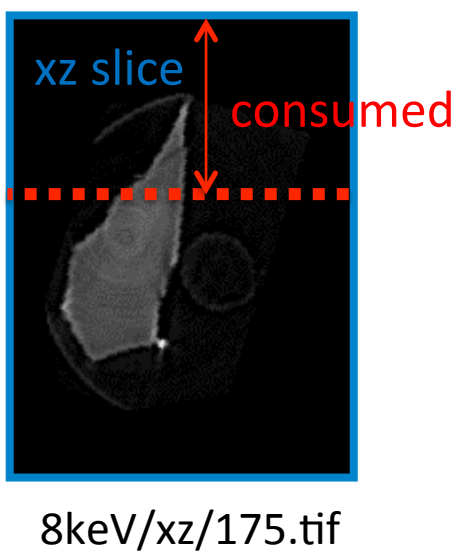
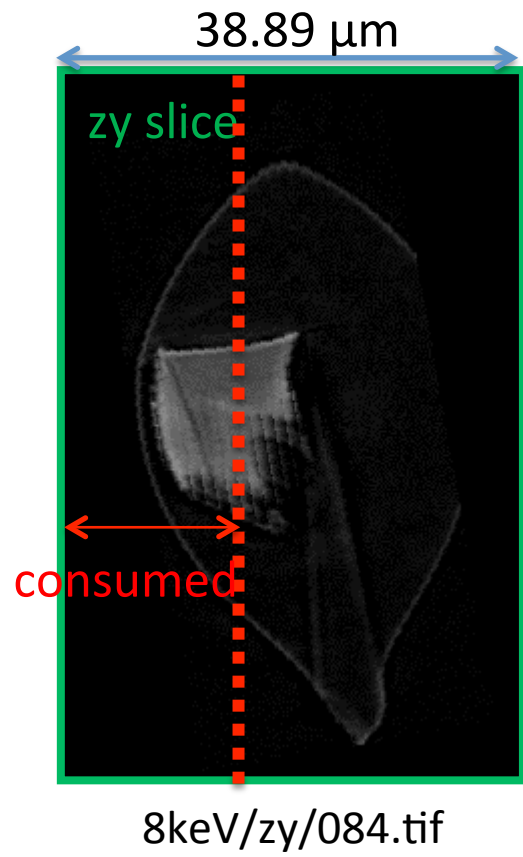
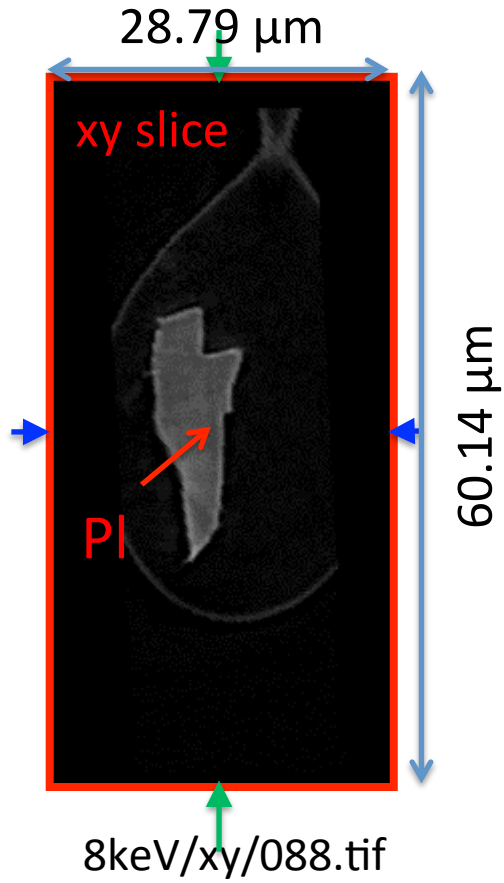
A, B, and C: shortest, middle, and longest axial radii, respectively,
of a best-fit ellipsoid for the particle

V: particle volume without pore
dz: CT image interval
LAC: linear attenuation coefficient of X-ray

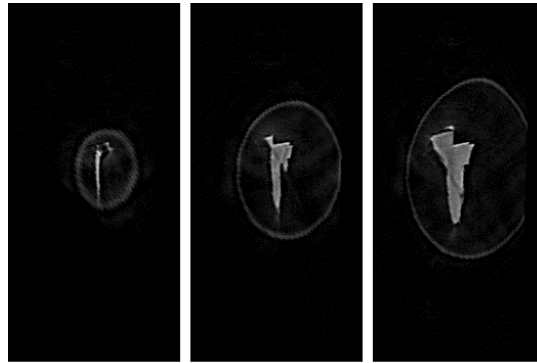
RA-QD02-0025-02 7 keV



RA-QD02-0025-02 8 keV



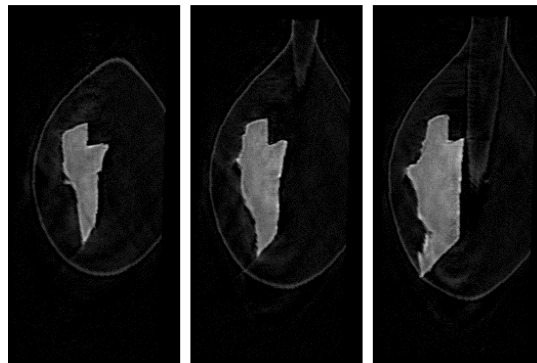
RA-QD02-0025-02 7 keV catalogue



041.tif

054.tif

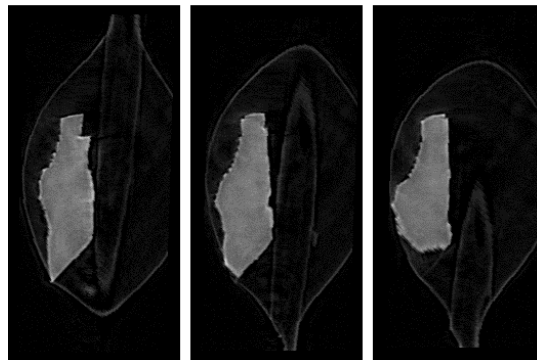
067.tif



080.tif

093.tif

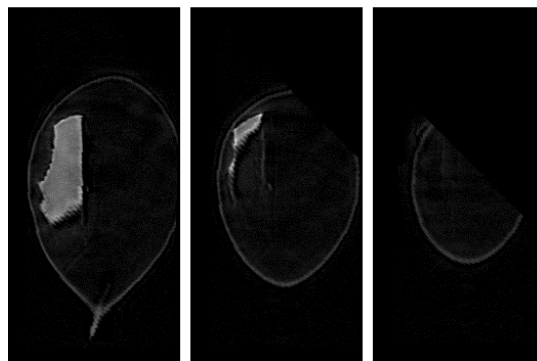
106.tif



119.tif

132.tif

145.tif



158.tif

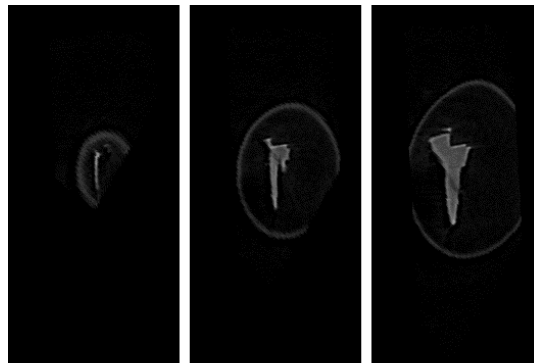
171.tif

184.tif

dZ = 2.22742 μm  21 μm

 287 cm^{-1} (LAC)

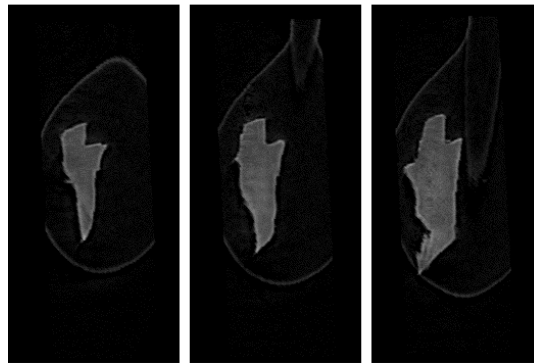
RA-QD02-0025-02 8 keV catalogue



041.tif

054.tif

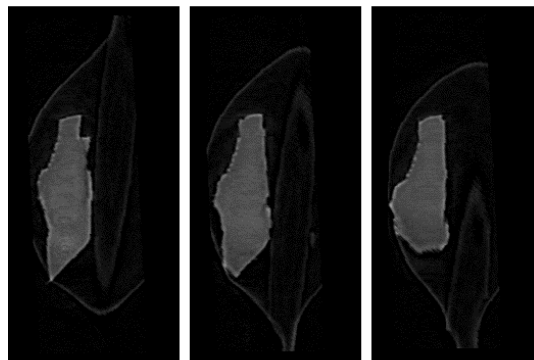
067.tif



080.tif

093.tif

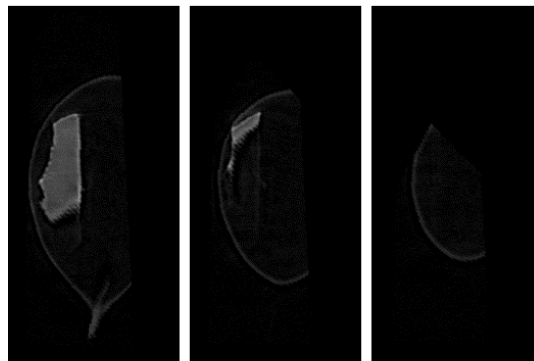
106.tif



119.tif

132.tif

145.tif



158.tif

171.tif

184.tif

dZ = 2.22742 μm

21 μm

287 cm^{-1} (LAC)

RA-QD02-0025-02 Dual energy histogram

