

## Sample Results Summary Sheet

Please return this form to the Curator for each allocated Sample

**Sample ID:** RA-QD02-0017

**PI:** Tomoki Nakamura

**Type and date of analysis performed:**

XRD                                      July/13/2011~ July /15/2011

FE-SEM, FE-EPMA                      Now/28/2011 ~ Now/30/2011

**Elements or phases identified:** (Mg, Si, olivine, pyroxene, aromatic carbon, etc.)

XRD : OI

FE-SEM : OI

FE-EPMA : Si, Ti, Al, Fe, Mn, Mg, Ca, Na, K, Cr, Ni, P

**Contaminant phases identified:** (Al, SUS, carbon particles, etc.)

N/A

**Sample handling:**

XRD

Attached to glass fiber with resin.

FE-SEM, FE-EPMA

Exposed in atmosphere.

Polished by M cross

C-coated (20 nm)

**State of sample pre-analysis:**

Attached to glass fiber with resin. (XRD)

Polished section with resin embedded (FE-SEM, FE-EPMA)

**State of sample post-analysis:**

Attached to glass fiber with resin. (XRD)

Polished section with resin embedded, C-coated (FE-SEM, FE-EPMA)

N<sub>2</sub> hold in sample holder.

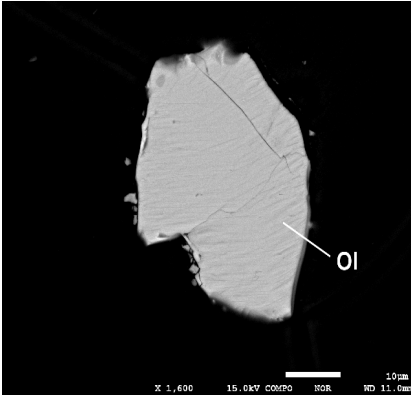
**Analysis data Notes:** (summary of the attached analysis data and/or images)

See attached sheets.

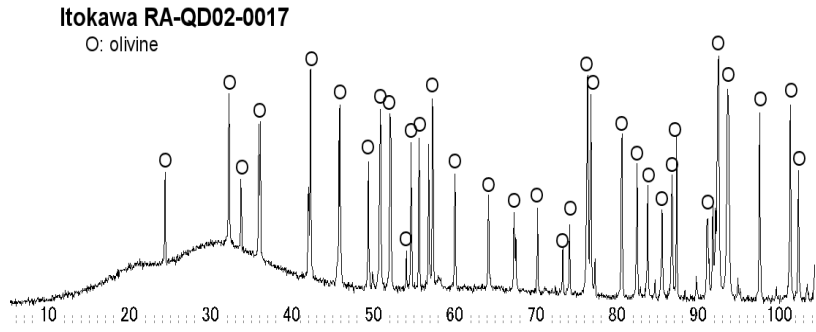
# RA-QD02-0017

Analysis S-XRD (polish) FE-SEM FE-EPMA  
 Present status Putted butt

FE-SEM/BSE



S-XRD



FE-EPMA

wt%	Olivine n=0:Ol 1 sigma	LPx n=1	LPx 1 sign HPx n=0	HPx 1 sign Plagio n=0:Pl 1 sigma
SiO2	37.31	0.35	51.14	
TiO2	0.00	0.01	0.33	
Al2O3	0.01	0.01	0.33	
FeO	26.59	0.23	5.66	
MnO	0.51	0.02	0.24	
MgO	35.96	0.59	18.66	
CaO	0.00	0.00	20.65	
Na2O	0.01	0.02	0.42	
K2O	0.01	0.01	0.03	
Cr2O3	0.01	0.01	0.53	
NiO	0.02	0.02	0.07	
P2O5	0.05	0.05	0.00	
SO3	0.01	0.01	0.00	
Total	100.50	0.86	98.04	

SUM

Comment

Olivine (Fa#)	29.32	0.36	
LPx(Fs#)			
LPx(Wo#)			
LPx(En#)			
HPx(Fs#)		8.65	
HPx(Wo#)		40.47	
HPx(En#)		50.87	
Pl(Or#)			
Pl(An#)			
Pl(Ab#)			