

Sample Results Summary Sheet

Please return this form to the Curator for each allocated Sample

Sample ID: RA-QD02-0010

PI: Akira Tsuchiyama

Type and date of analysis performed:

Tomography Jan/26/2011(7keV)

 Jan/26/2011(8keV)

Elements or phases identified: (Mg, Si, olivine, pyroxene, aromatic carbon, etc.)

Mode	OI	LPx	HPx	PI	Tr	Tae	Chm	CP	Kam
Vol %	19.86	45.55	3.24	30.73	0.46	0.07	-	-	-

Contaminant phases identified: (Al, SUS, carbon particles, etc.)

N/A

Sample handling:

Exposed in atmosphere.

State of sample pre-analysis:

Attached to carbon fiber with resin.

State of sample post-analysis:

N₂ hold in sample holder.

Analysis data Notes: (summary of the attached analysis data and/or images)

See attached sheets.

RA-QD02-0010

Operation Date Jan/26/2011 (7 keV)
 Jan/26/2011 (8 keV)
operated by T. Nagano (7 keV)
 T. Matsumoto (8 keV)
analyzed by T. Matsumoto

Mode	Ol	LPx	HPx	Pl	Tr	Tae	Chm	CP	Kam
Vol %	19.86	45.55	3.24	30.73	0.46	0.07	-	-	-

A (μm)	B (μm)	C (μm)	V (μm^3)	Porosity (%)
29.9	62.4	74.5	480749	0.02

Ol: olivine
LPx: low calcium pyroxene
HPx: high calcium pyroxene
Pl: plagioclase
Tr: troilite
Tae: taenite
Chm: chromite
CP: calcium phosphate
Kam: kamacite

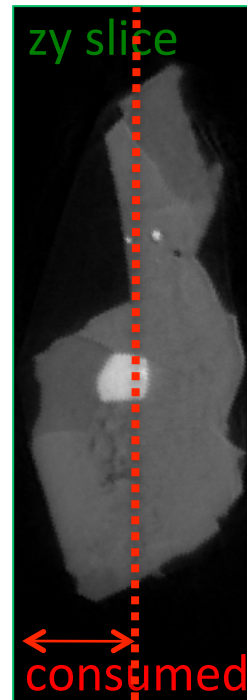
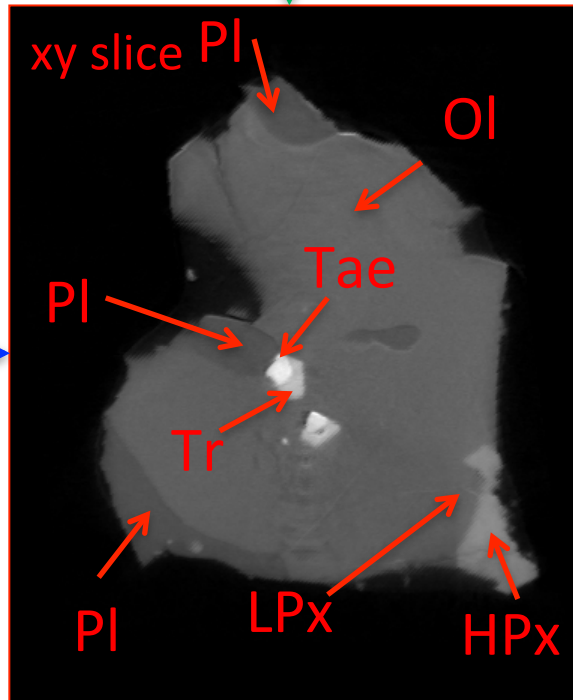
A, B, and C: shortest, middle, and longest axial radii, respectively,
of a best-fit ellipsoid for the particle

V: particle volume without pore
dz: CT image interval
LAC: linear attenuation coefficient of X-ray

RA-QD02-0010 7 keV

160.2 μm

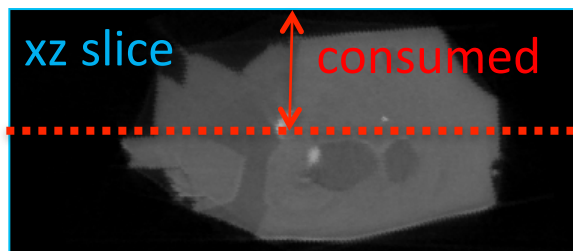
69.01 μm



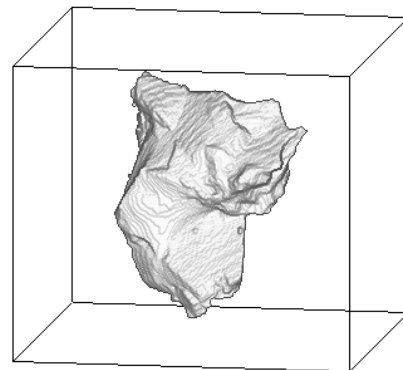
196.8 μm

7keV/xy/197.tif

7keV/zy/187.tif



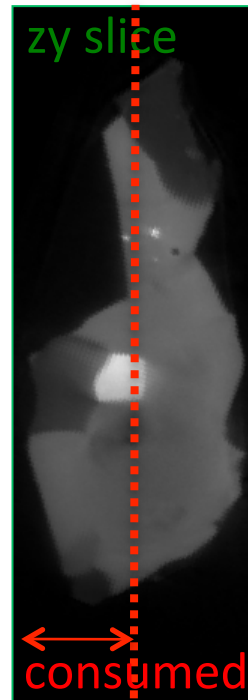
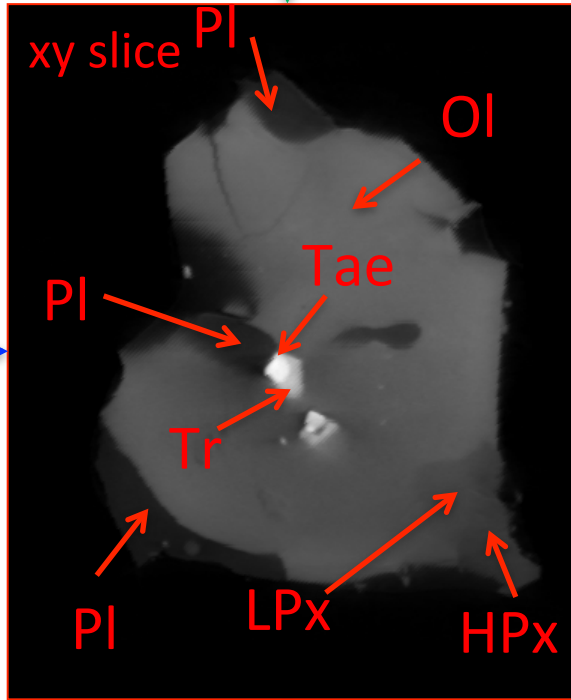
7keV/xz/232.tif



RA-QD02-0010 8 keV

160.2 μm

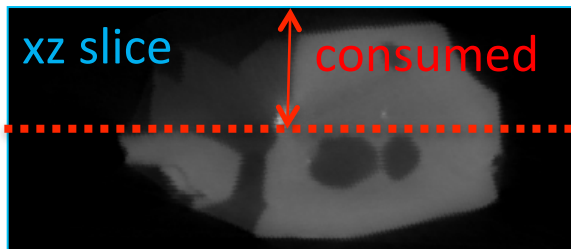
69.01 μm



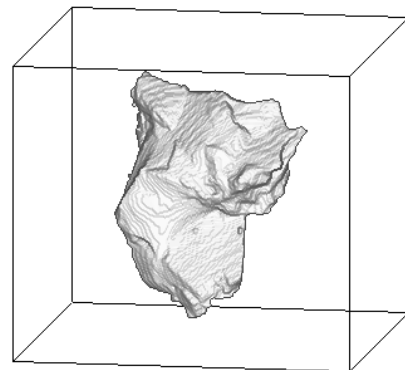
196.8 μm

7keV/xy/197.tif

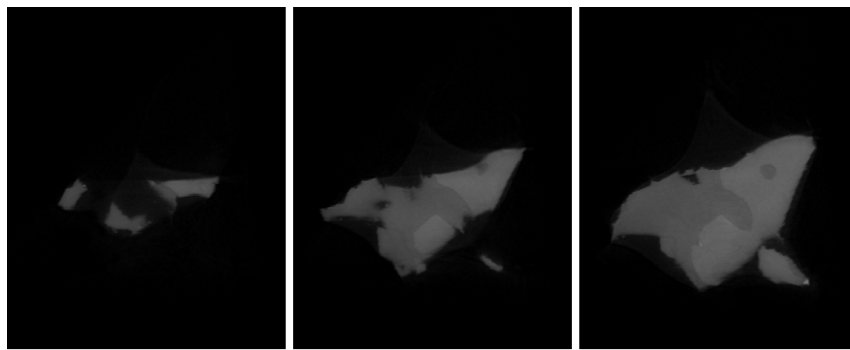
7keV/zy/187.tif



7keV/xz/232.tif



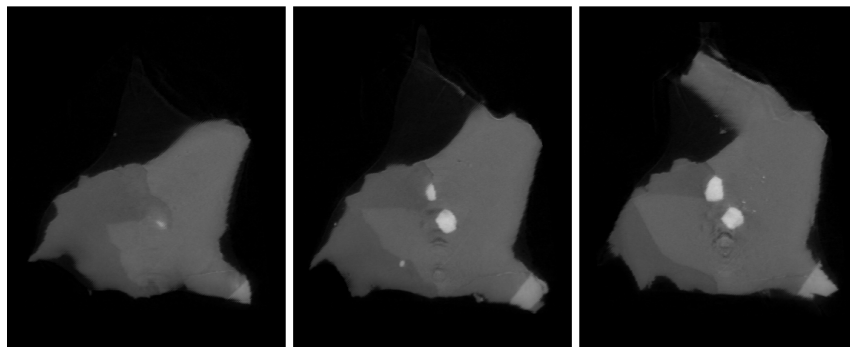
RA-QD02-0010 7 keV catalogue



125.tif

137.tif

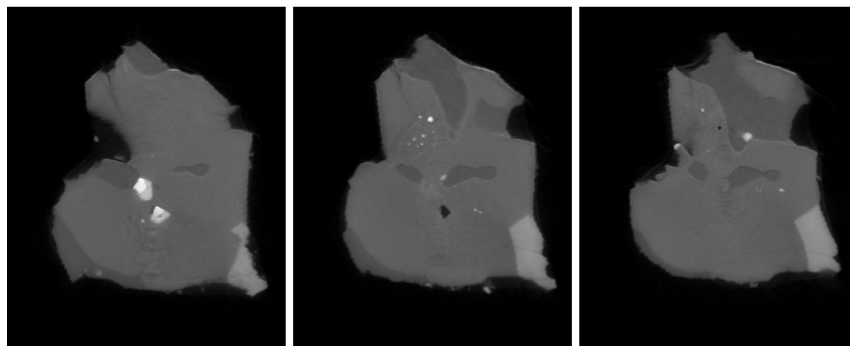
149.tif



161.tif

173.tif

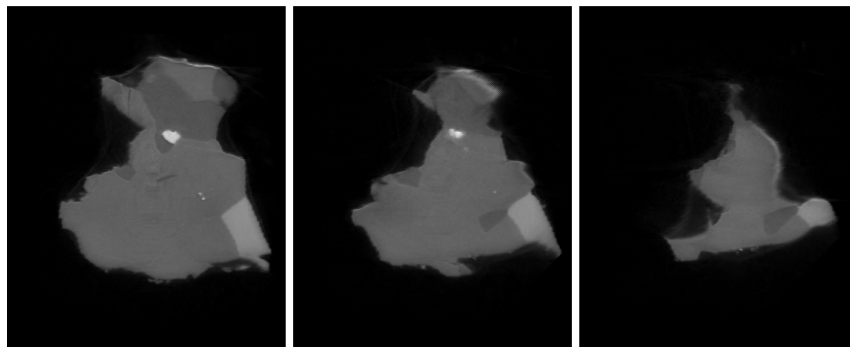
185.tif



197.tif

209.tif

221.tif

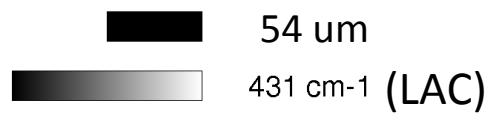


233.tif

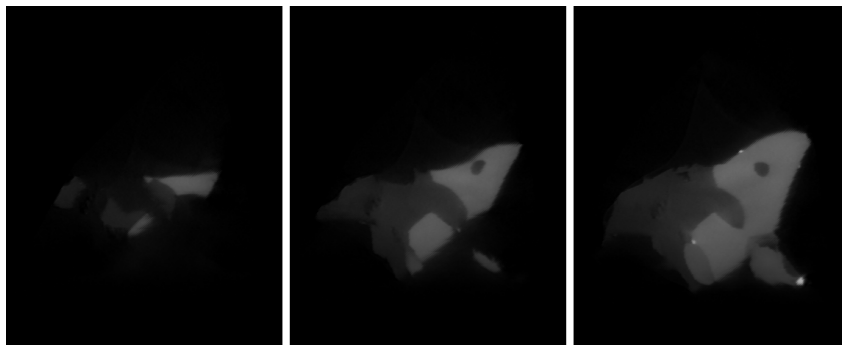
245.tif

257.tif

dZ = 5.112 μm



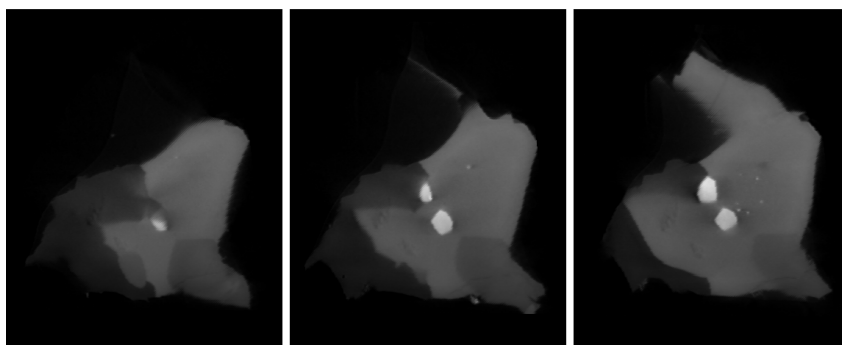
RA-QD02-0010 8 keV catalogue



125.tif

137.tif

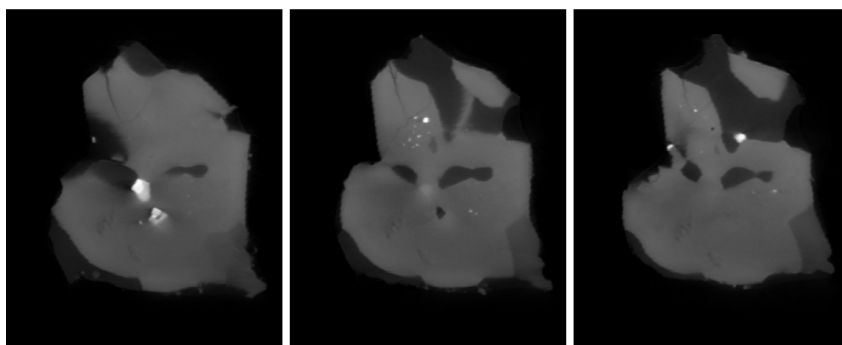
149.tif



161.tif

173.tif

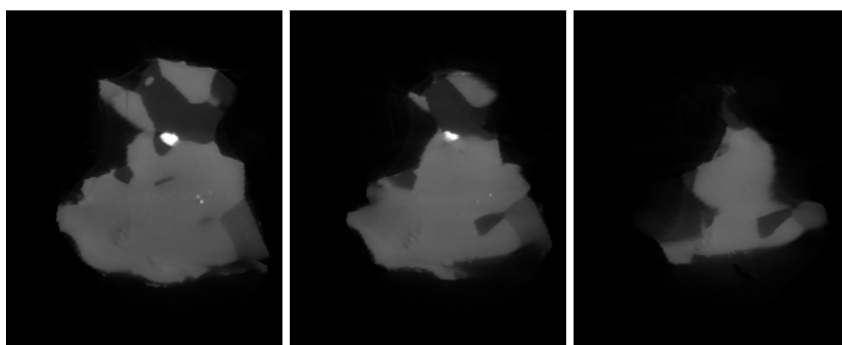
185.tif



197.tif

209.tif

221.tif

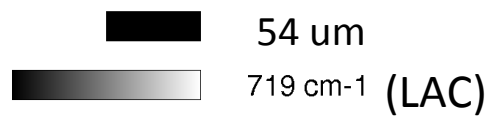


233.tif

245.tif

257.tif

dZ = 5.112 μm



RA-QD02-0010 Dual energy histogram

