

Instruction to open a FFTC and a sample holder

Parts Name

<Sample holder assembly>



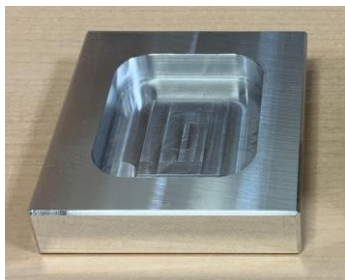
1. Fixing ring
2. Wave washer
3. Quartz window
4. Sapphire dish
5. Holder

<FFTC (Facility-to-Facility Transfer Container)>

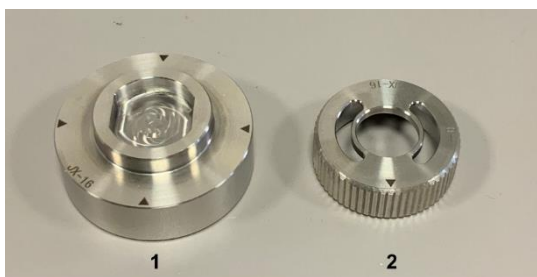


1. Sample holder
2. Wave washer
3. Pack-holder
4. FFTC base
5. FFTC lid

<FFTC holder>



<Sample holder opening tool>



- 1. Sample holder stage**
- 2. Opening tool**

Procedure

<Taking a sample holder from FFTC>

Recommend not to put a FFTC in vacuum condition. Inside the FFTC may be negatively pressurized by evacuation and FFTC cannot be opened. See “Troubleshooting” if this happens.

1) Loosen a socket set screw using a 1.5 mm hex wrench

* No need to remove the socket set screw



2) Put a FFTC on the FFTC holder

3) Unscrew a lid of FFTC with holding the FFTC holder

* Do not remove screws on the FFTC lid.



4) Remove two screws using a 2.5 mm hex wrench



5) Slowly remove a lid of pack-holder, and take a sample holder

* Be sure that a wave washer is placed under the sample holder. If you remove the lid quickly, the sample holder may jump up and drop.

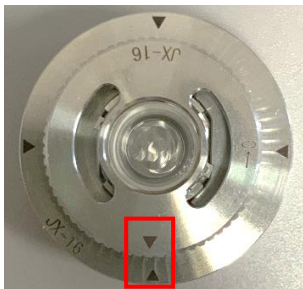


<Opening a sample holder>

1) Put a sample holder on the sample holder stage



2) Put the opening tool on a sample holder and align the arrow marked on the opening tool and the holder stage (eighter is fine).



3) Gently press and rotate the opening tool counterclockwise



4) Remove the opening tool, fixing ring, and wave washer

5) Open the quartz window

Troubleshooting

<Unable to open FFTC lid>

If FFTC cannot be opened, which may happen when FFTC is placed in vacuum condition or when a screw of FFTC lid is stuck,

- 1) unscrew and remove six screws on top of the FFTC lid,
- 2) remove the top plate and the quartz glass viewport.

Then, the pack-holder can be removed with the normal procedure.



<Sample holder opening tool not working properly>

If the opening tool does not work properly, you can also use a tweezer to remove the fixing ring. In this case, be careful not to drop the sample holder from the holder stage.

